

# BOUND

BY GANGA

# TABLE OF CONTENTS

Cover Page .....	1
Design Philosophy .....	3
Collection Inspiration .....	4
Research & Development / Process Work .....	5–6
Final Collection Illustration .....	7
Technicals:	
Look 1 – The Illusion & Fantasy .....	8–9
Look 2 – Launch & Initiate .....	10–11
Look 3 – Corporate & Adulthood .....	12–13
Look 4 – The Entrepreneur .....	14
Look 5 – The Boss / Boss Lady / Top Dog .....	15–17
Photographs:	
Each Look (Front, Back, Right and Left side)...	18–22
Final Runway Photographs.....	23

# Design Philosophy

This collection is rooted in the **concept of growth, both personal and professional**. It reflects the evolving journey of a **woman stepping into her confidence, independence, and power**. It explores transformation not as a single moment, but as a continuous process, where identity is shaped through experience, resilience, self-expression and especially garments.

My design philosophy centers on creating garments that are **not only visually impactful but also emotionally meaningful**. I approach design with the intention that each piece should answer the question: why should this garment exist? In this collection, the answer lies in storytelling, using fashion as a medium to **represent strength, progression, and individuality**.

A key foundation of this collection is **inclusivity**. **Each design was created with women of all ethnicities, backgrounds, and skin tones in mind**. The silhouettes, color palette, and styling choices were carefully considered to ensure that every piece enhances and celebrates diverse forms of beauty, allowing a **wide range of women** to see themselves reflected in the work.

# Collection Inspiration

The collection draws inspiration from **tailored construction and structured silhouettes, symbolizing strength and control**, while also incorporating fluidity and movement to represent growth and change. **Each garment embodies a different stage of transformation**, using proportion, fit, and detailing to communicate a sense of evolution. Elements such as sharp tailoring, elongated forms, and controlled volume highlight the balance between **structure and freedom**.

Throughout this process, I was challenged both creatively and technically. This project pushed me to think beyond aesthetics and focus on intentional design, where every seam, silhouette, and detail contributes to a larger narrative. It allowed me to develop a deeper understanding of **how garments can communicate ideas, emotions, and identity**. Overall, this collection represents not only the growth of the wearer but also my own growth as a designer, marking a transition toward more purpose-driven, thoughtful, and expressive design.

# Corrections and Adding Elements

Hardware, textiles, and construction techniques informing the final silhouettes



FINAL BUTTON

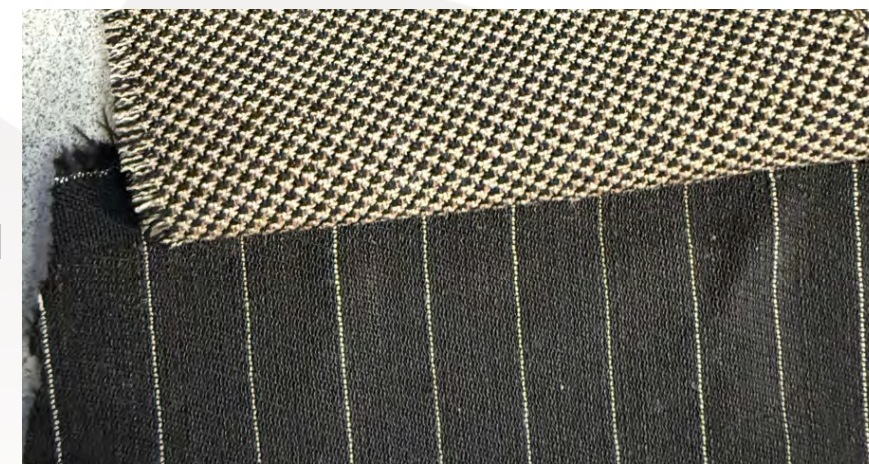
Antique-inspired metal buttons were selected to introduce a sense of heritage and craftsmanship.



Metal eyelets were selected to support corsetry-inspired back closures, allowing for adjustable fit and controlled shaping.



Fabric picks- Cotton, wool and cotton polyester for lining



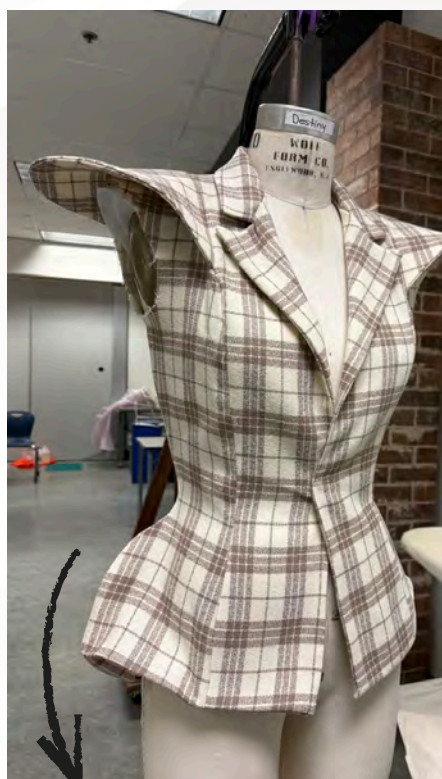
Final Fabric selection - cotton wool

A restrained neutral palette was developed to support everyday wear while maintaining a refined, tailored aesthetic

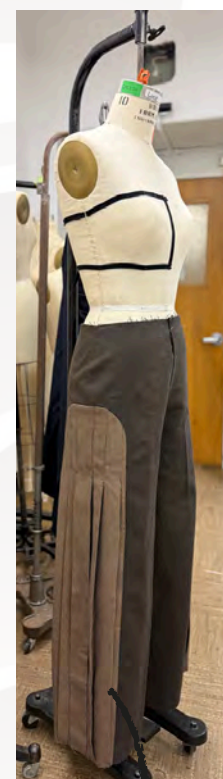


Cinched waist silhouette

Shorten the sleeve length



Added structured shoulder detail.



Contrast panel & pleat construction

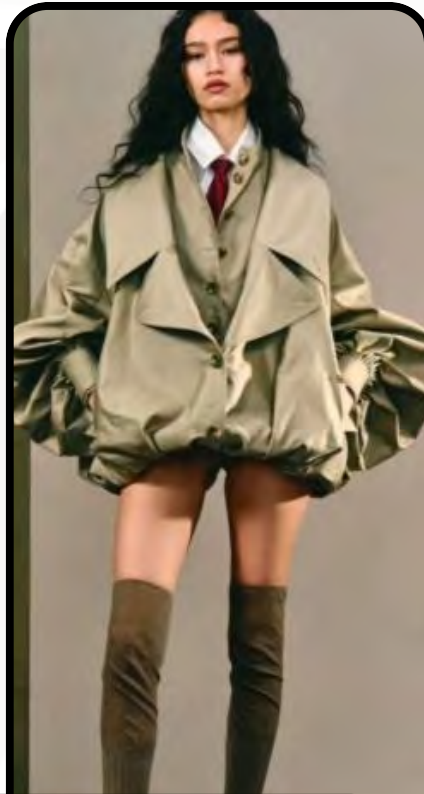


Adjustable lace-up back closure is too tight.



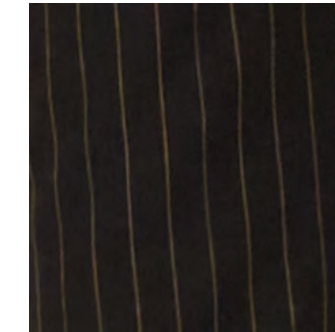
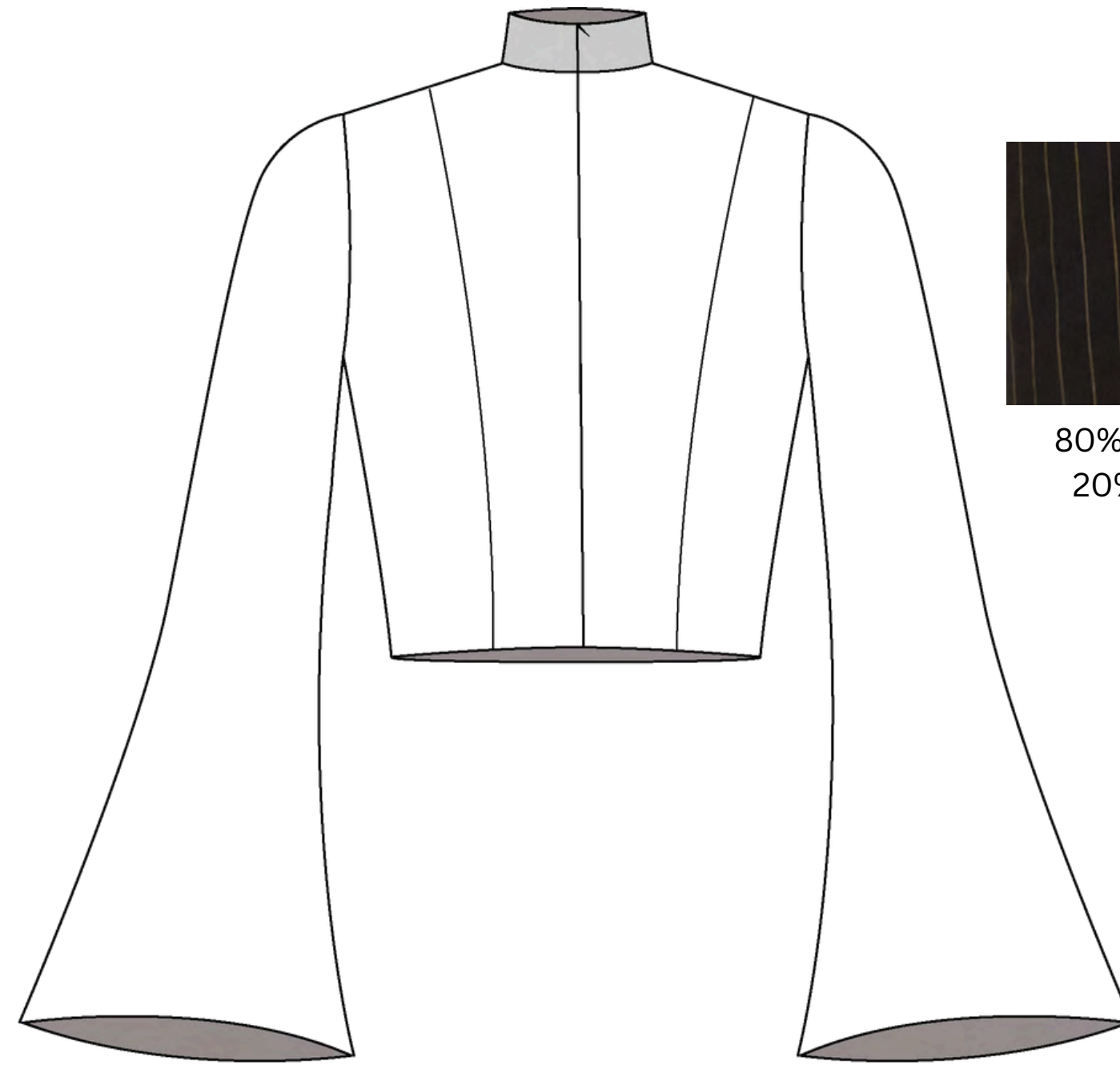
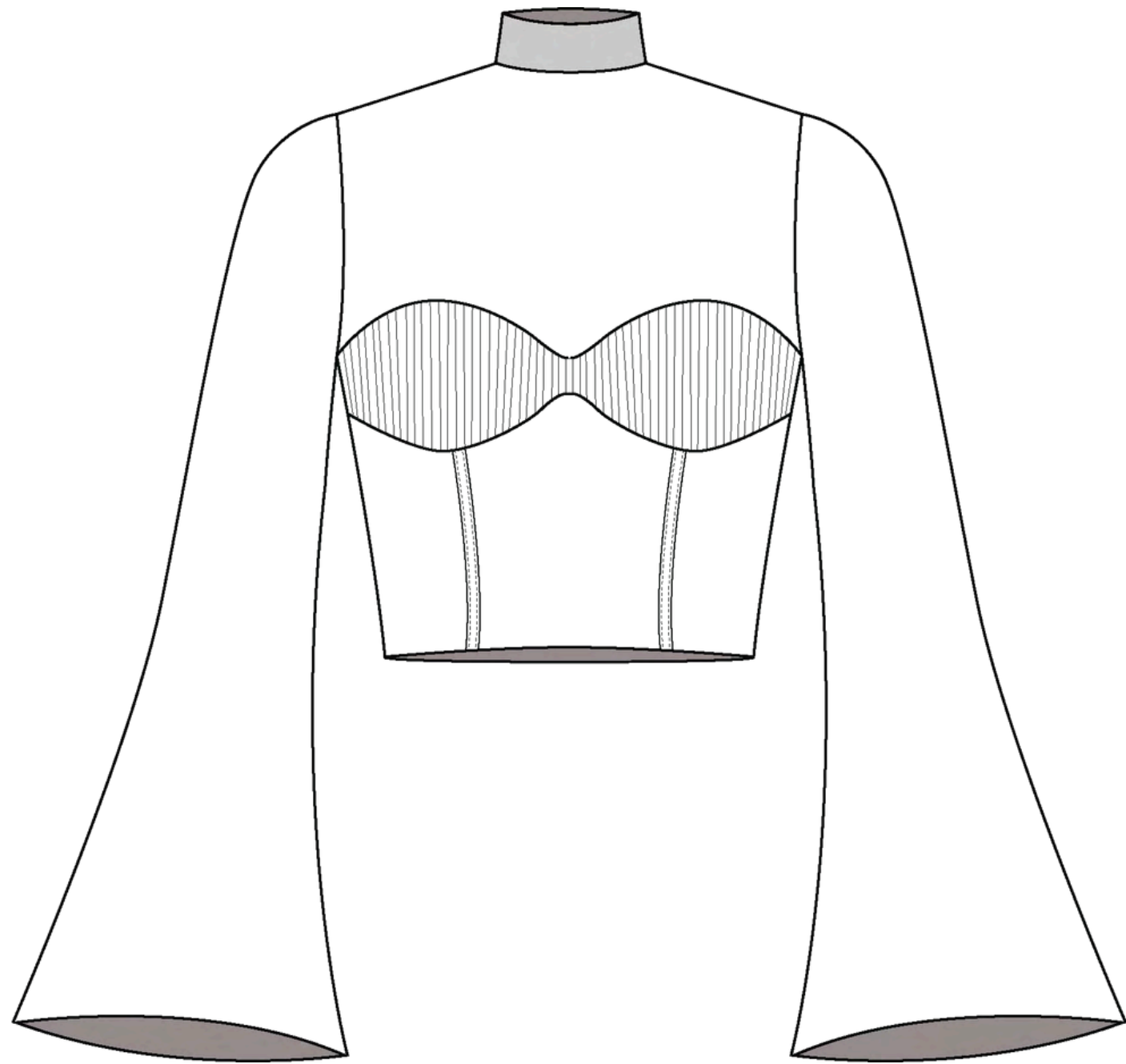
Grounding the collection with a dramatic long coat



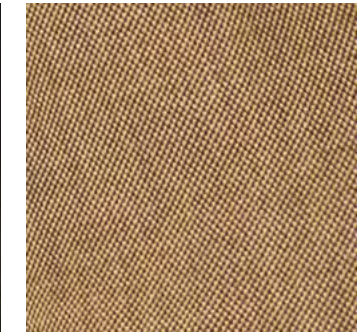




# LOOK 1 GARMENT 1 : THE ILLUSION



80% cotton  
20% poly



50% wool  
30% cotton  
20% cotton

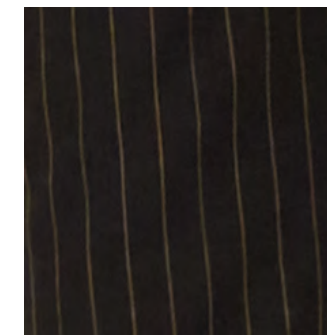
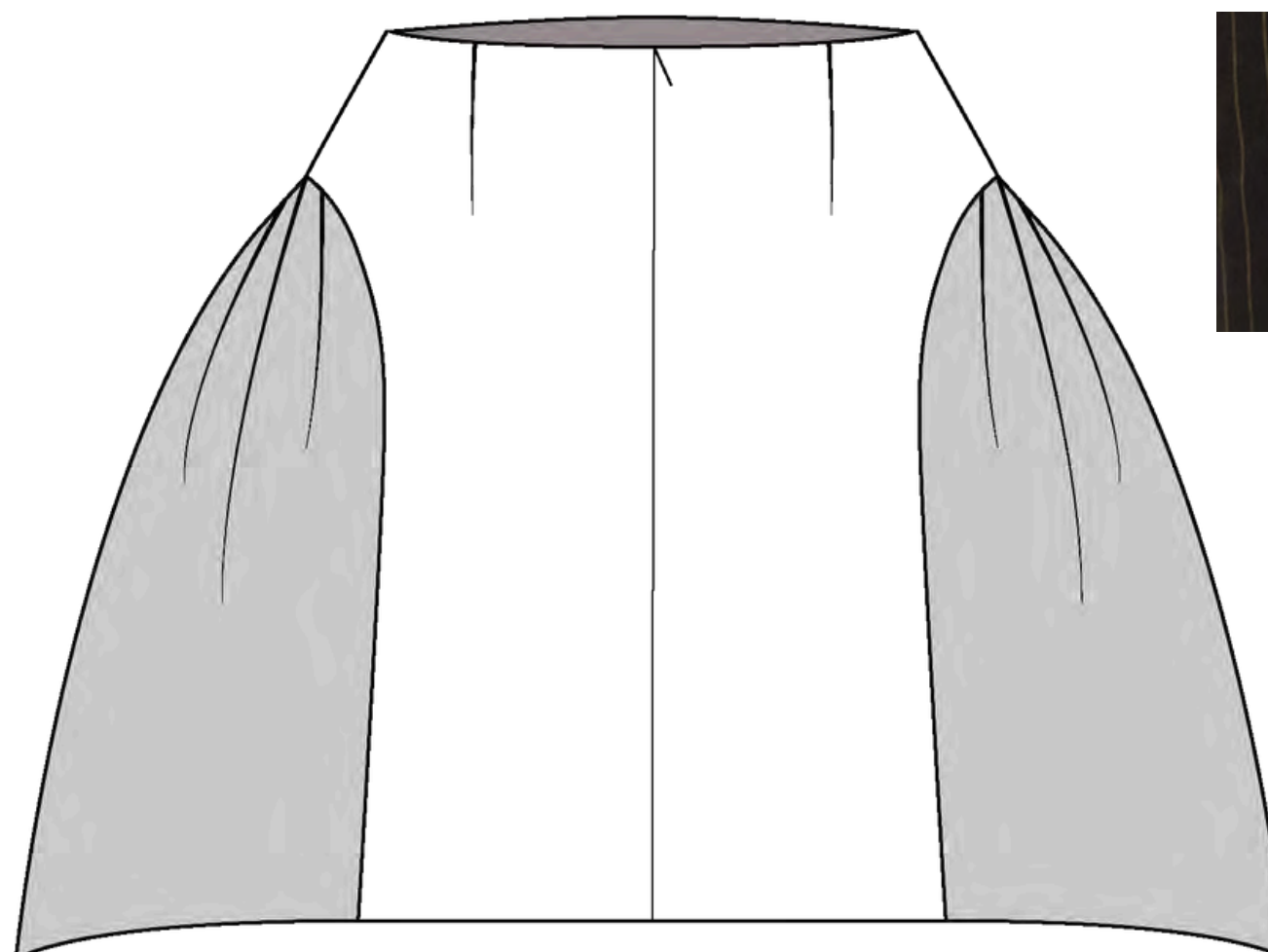
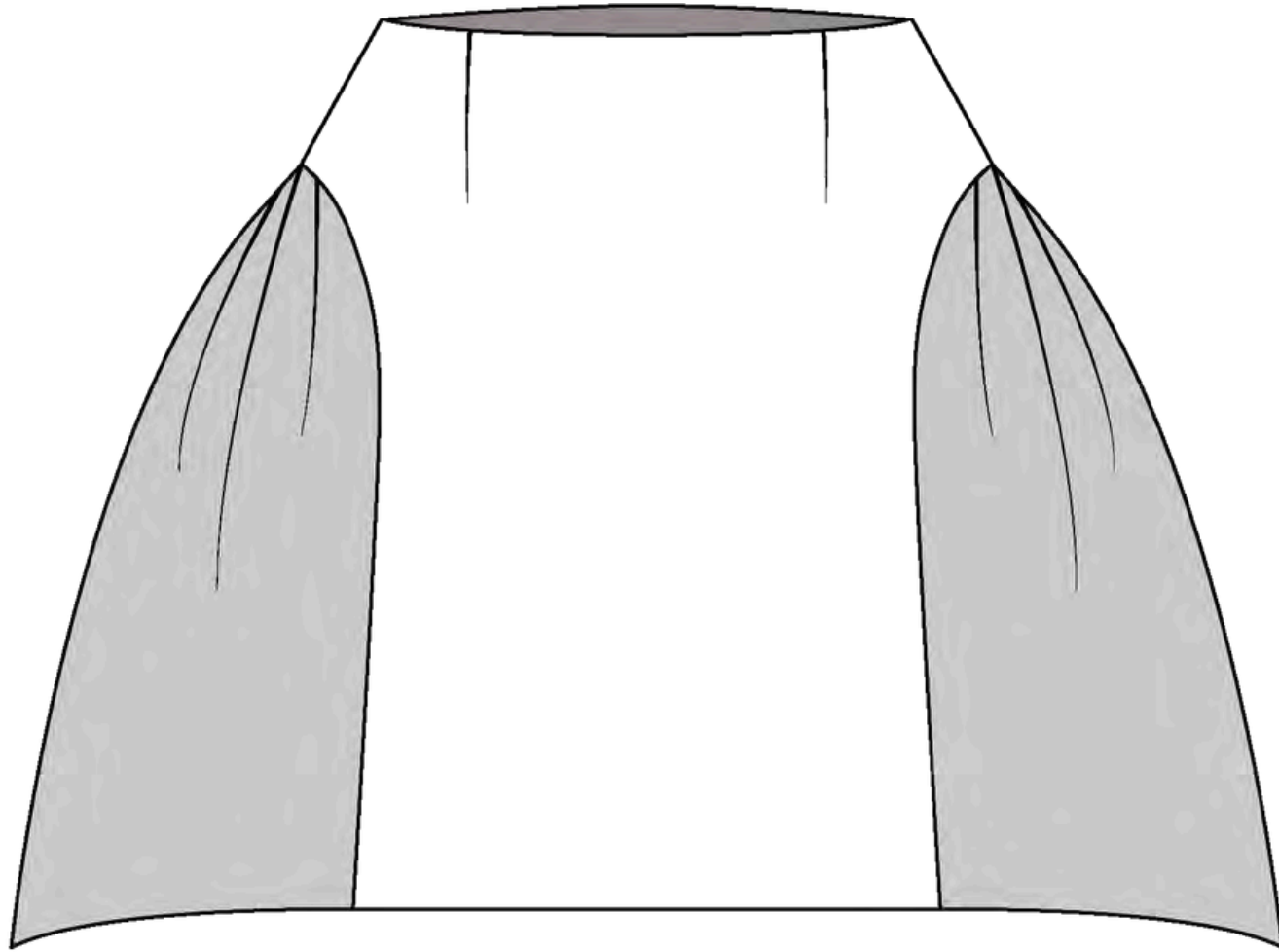


Wool  
Fuse

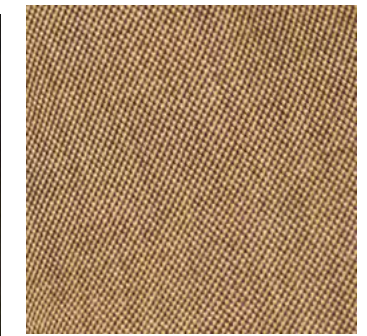


Invisible zipper

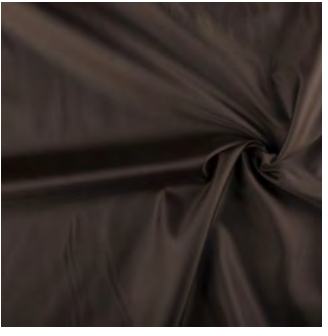
# LOOK 1 GARMENT 2 : FANTASY



80% cotton  
20% poly



50% wool  
30% cotton  
20% cotton

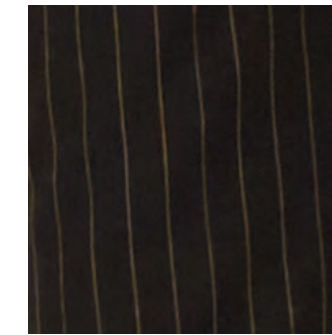
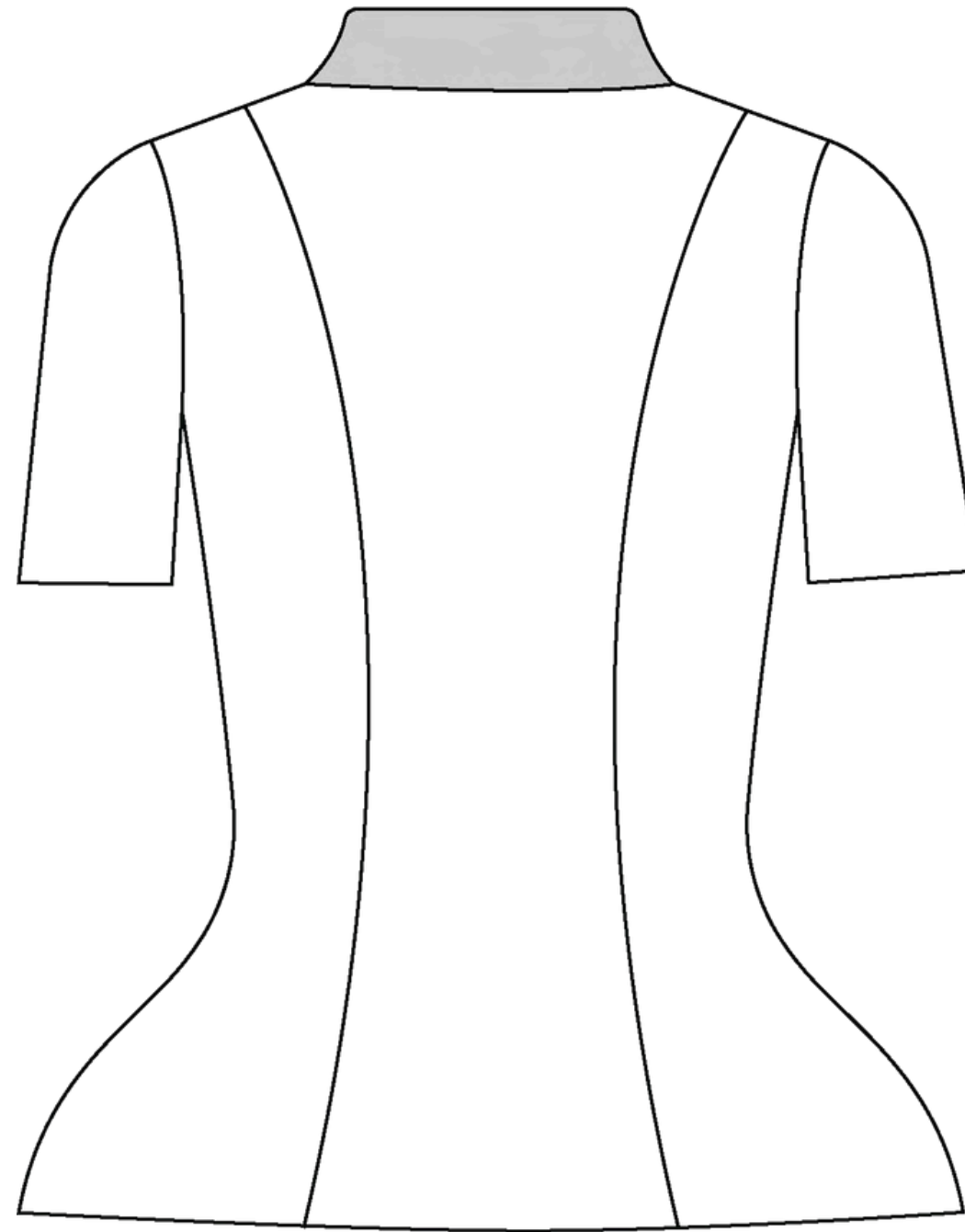
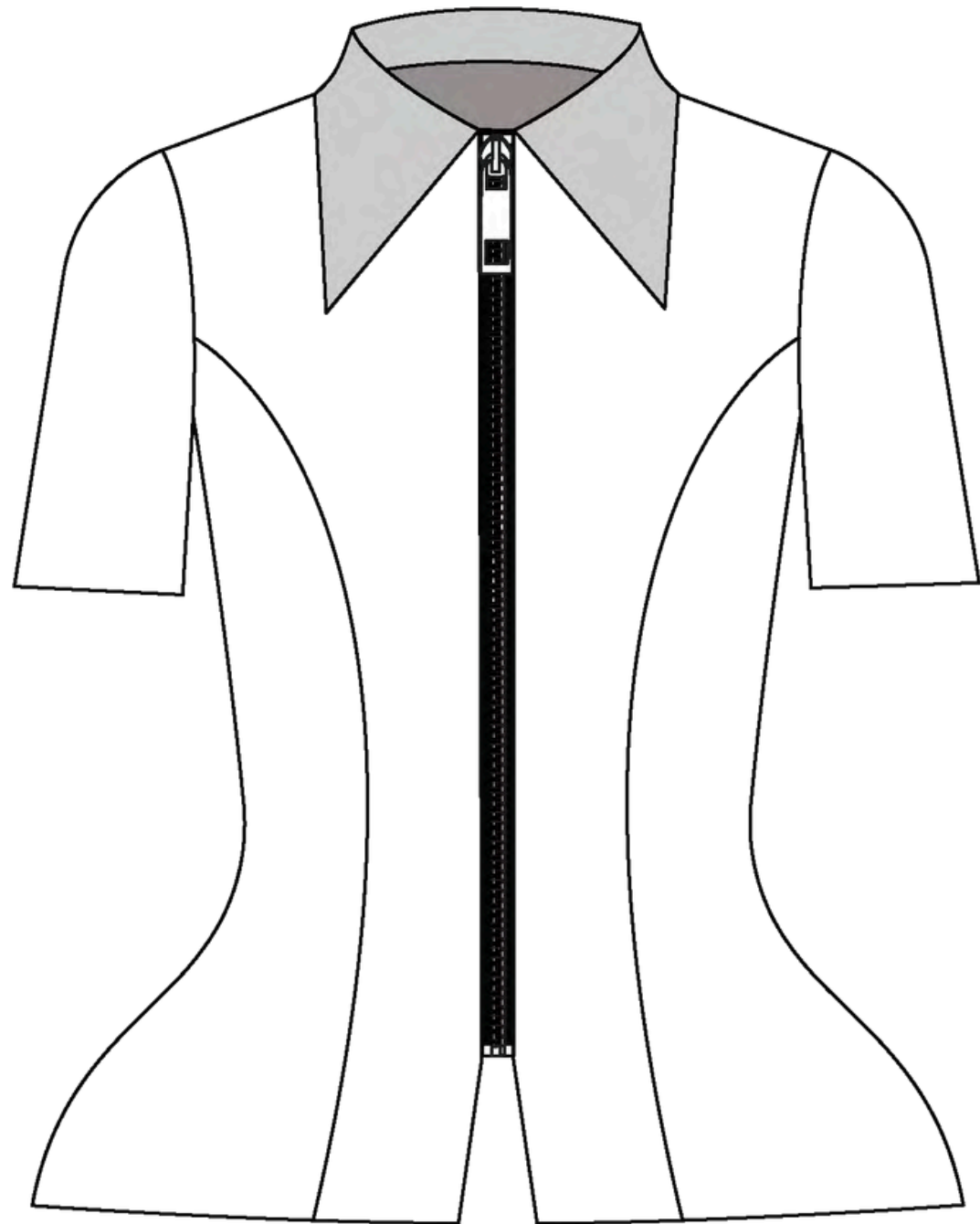


Acetate

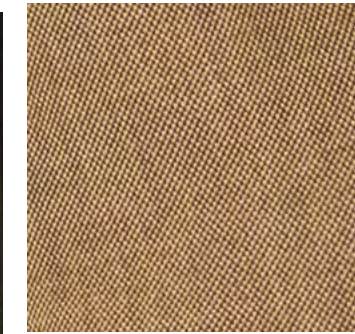


Invisible zipper

# LOOK 2 GARMENT 1 : LAUNCH



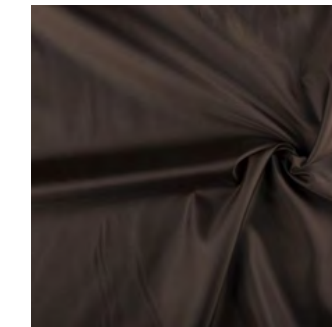
80% cotton  
20% poly



50% wool  
30% cotton  
20% cotton



Wool  
Fuse

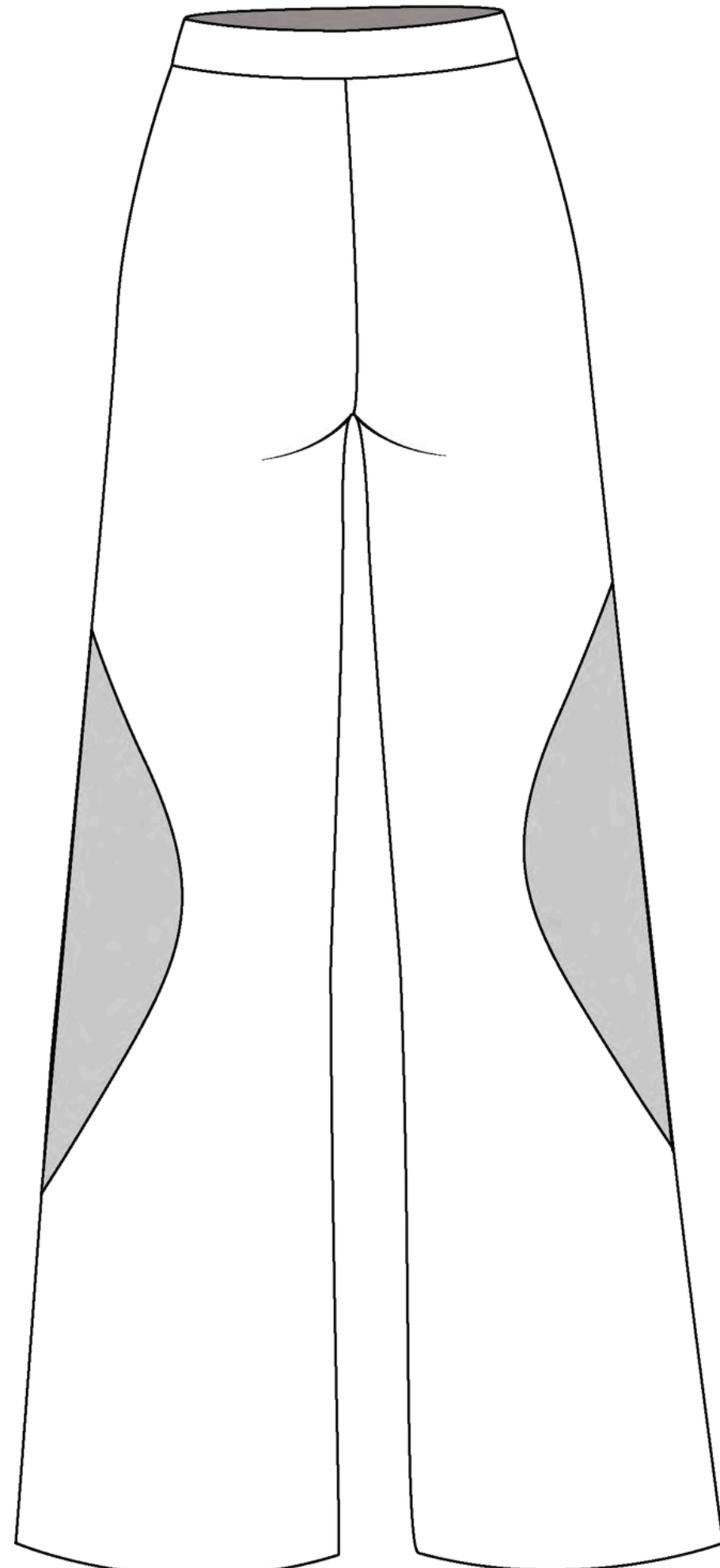
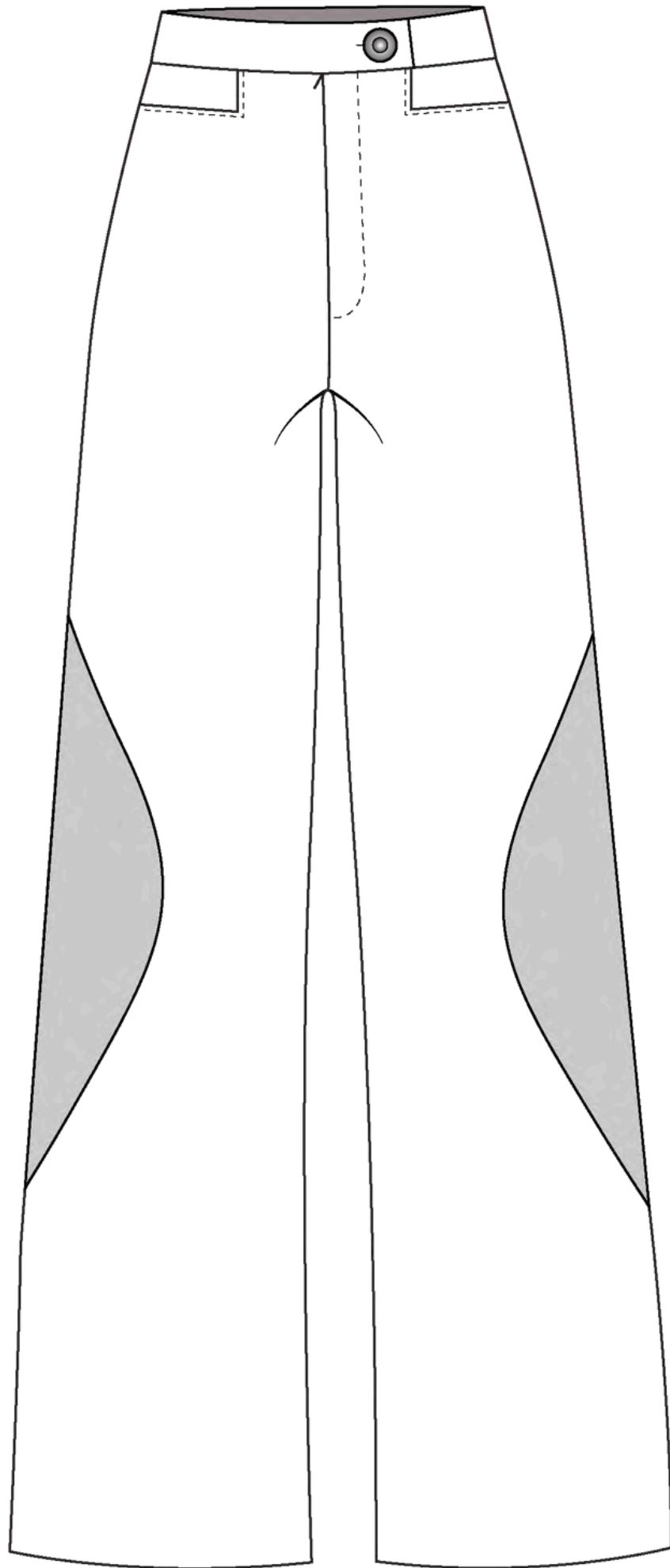


Acetate

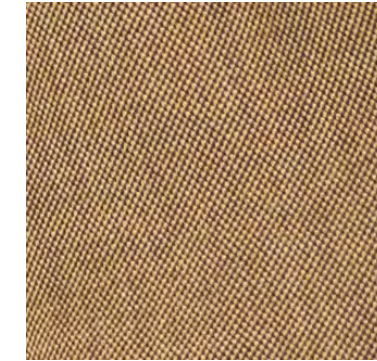


Separating zipper

# LOOK 2 GARMENT 2 : INITIATE



80% cotton  
20% poly



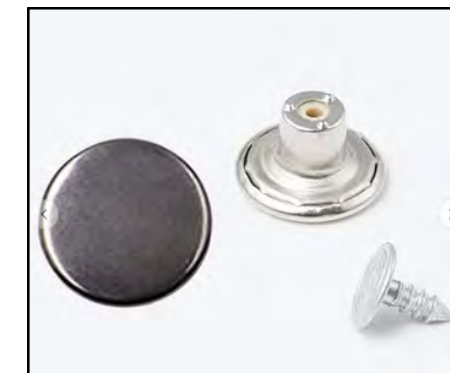
50% wool  
30% cotton  
20% cotton



Wool  
Fuse

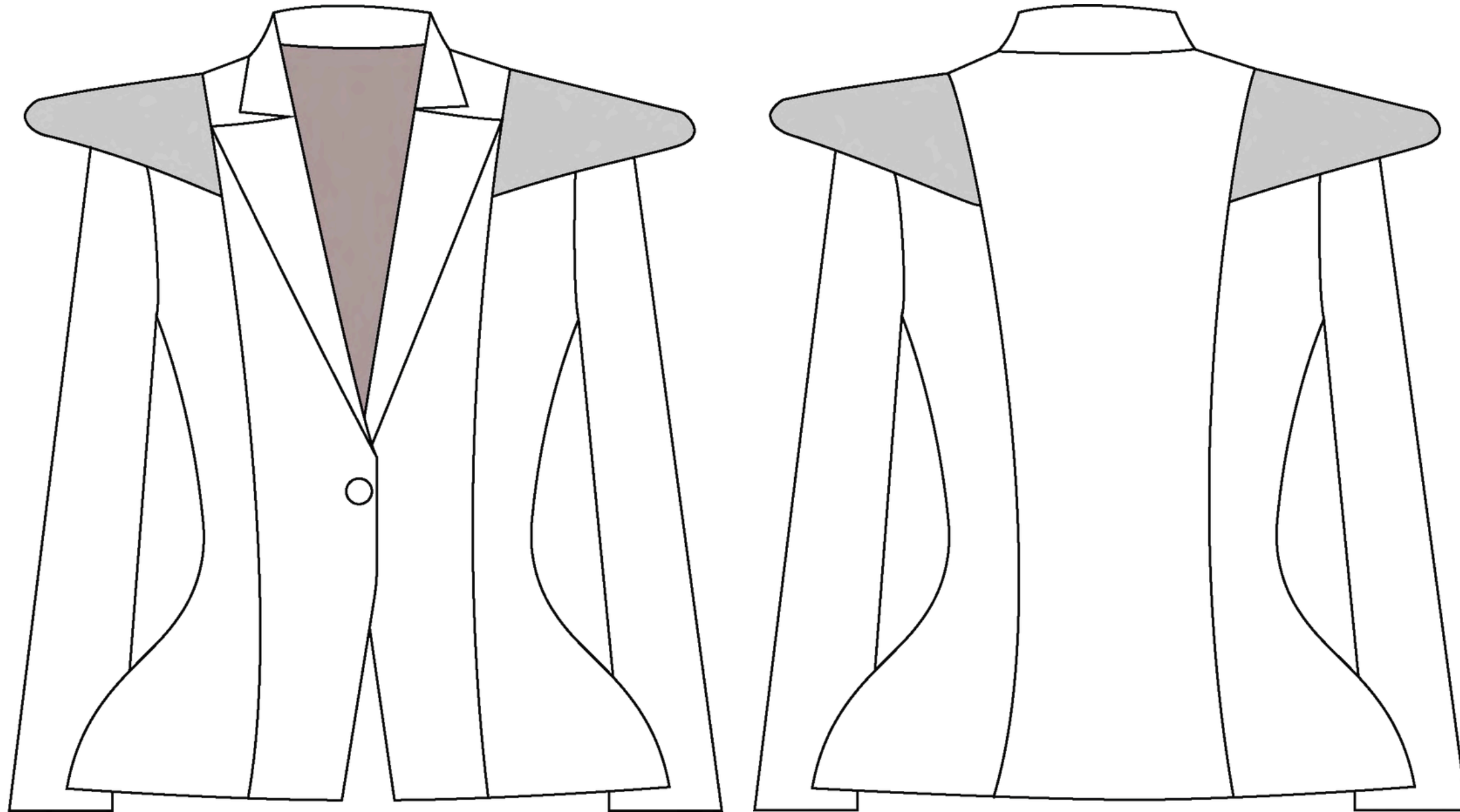


Close ended zipper

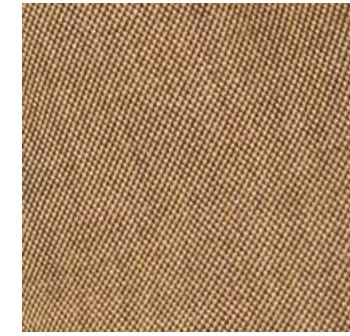


Jean button

# LOOK 3 GARMENT 1 : CORPORATE



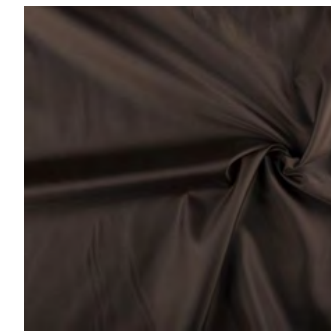
80% cotton  
20% poly



50% wool  
30% cotton  
20% cotton



Wool  
Fuse

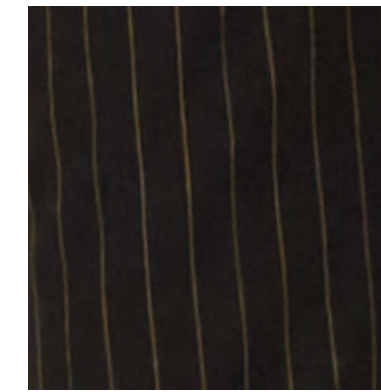
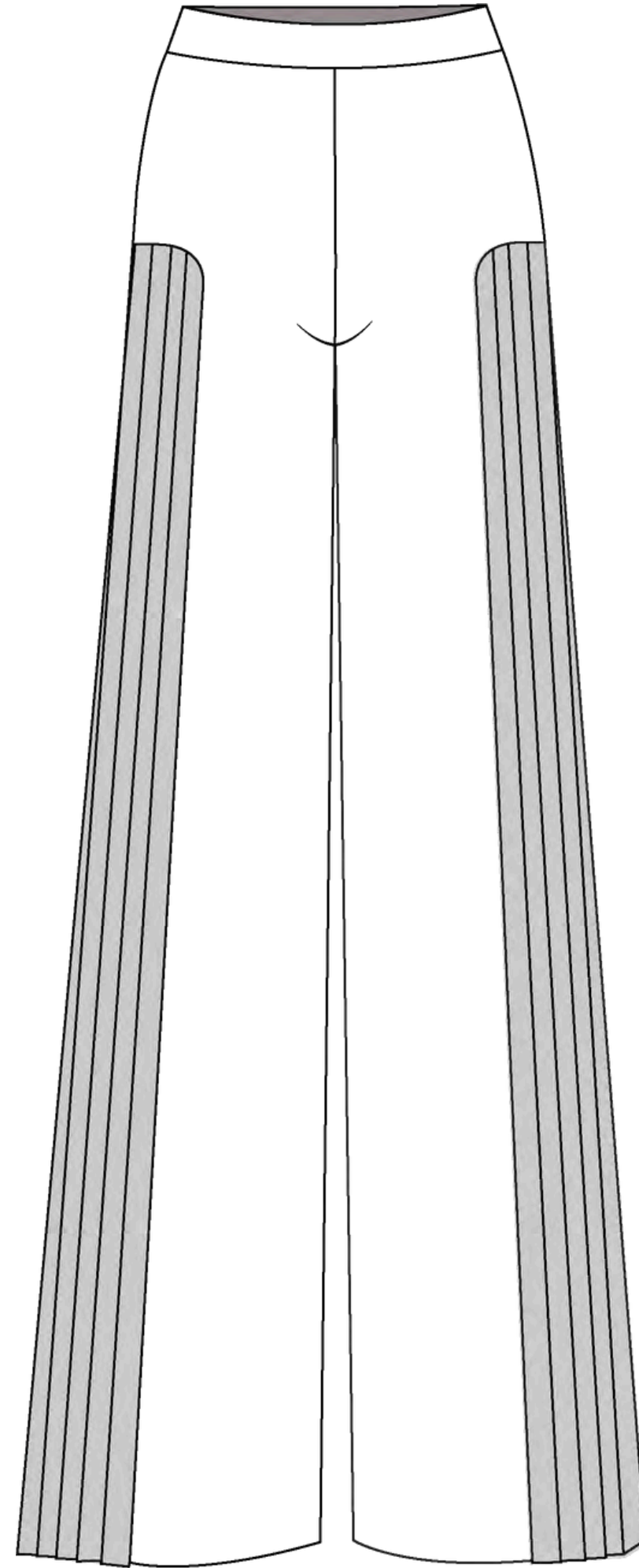
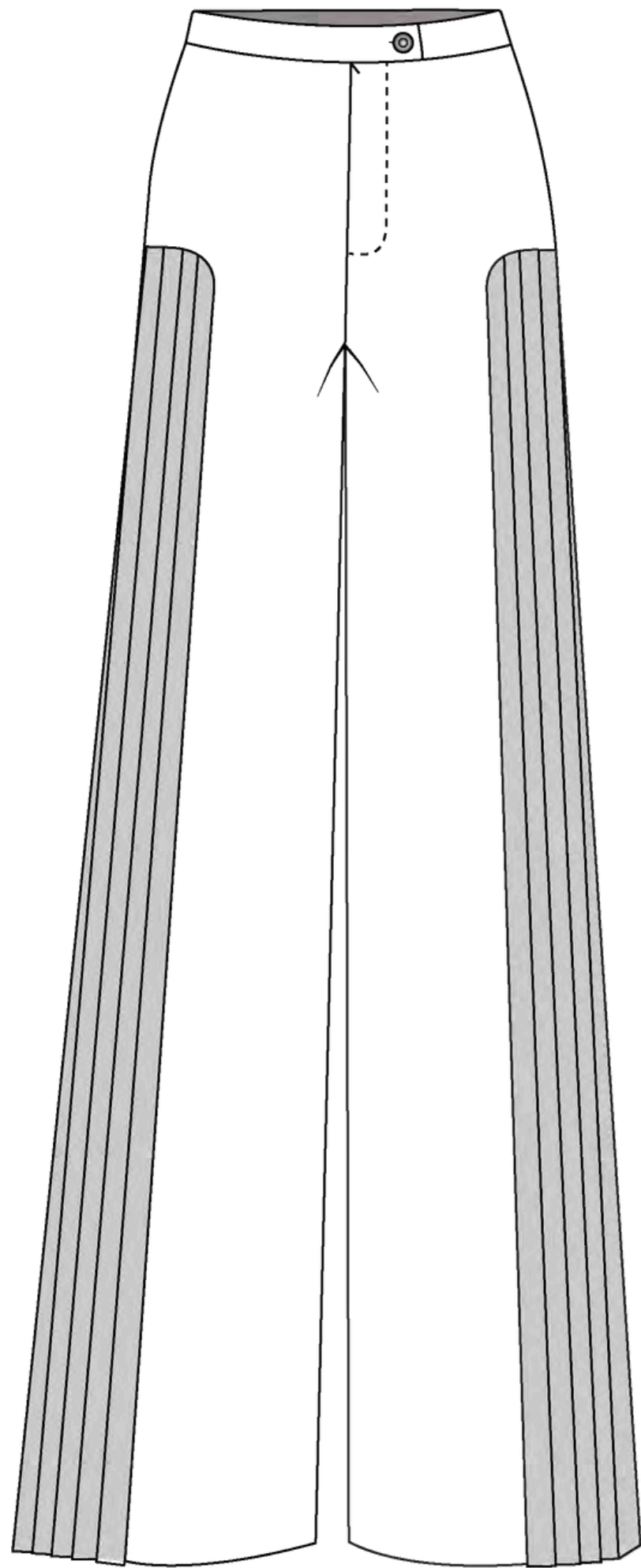


Acetate

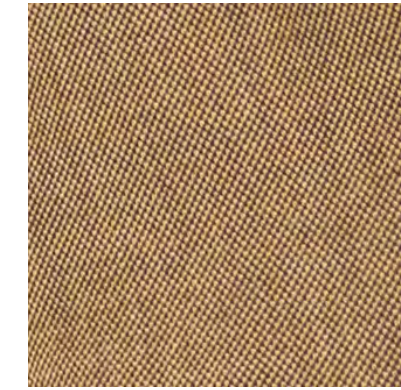


Coat Button

# LOOK 3 GARMENT 1 : ADULTING



80% cotton  
20% poly



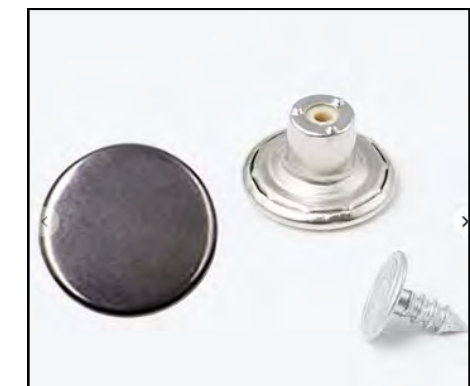
50% wool  
30% cotton  
20% cotton



Wool  
Fuse

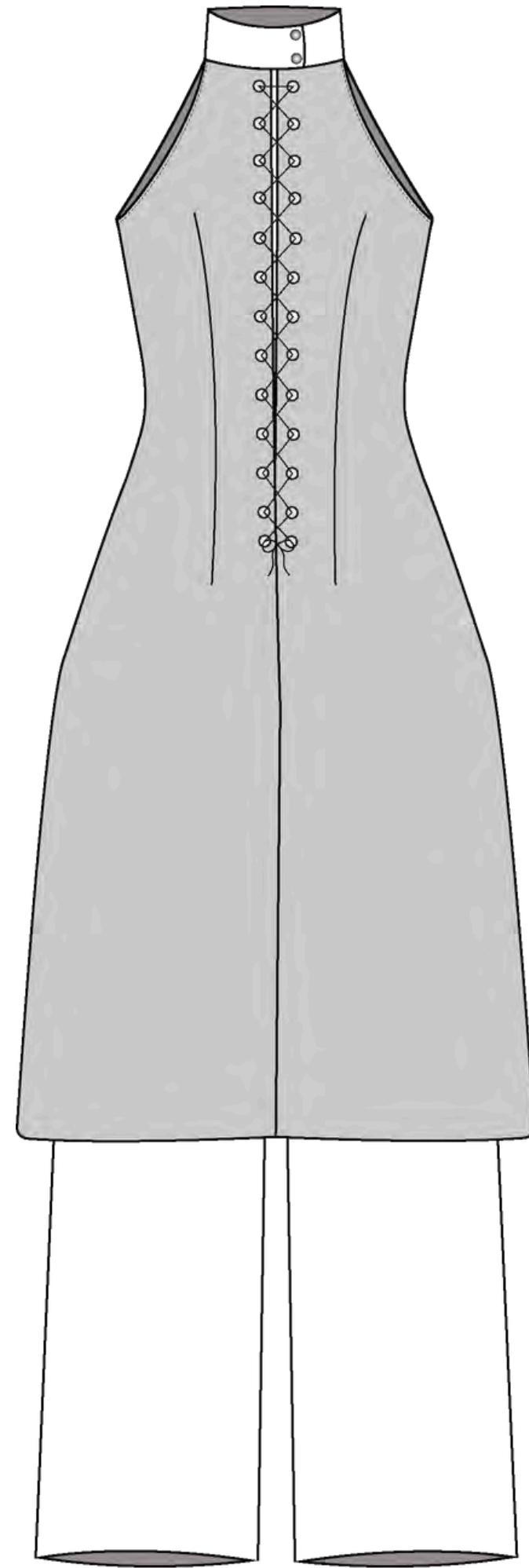
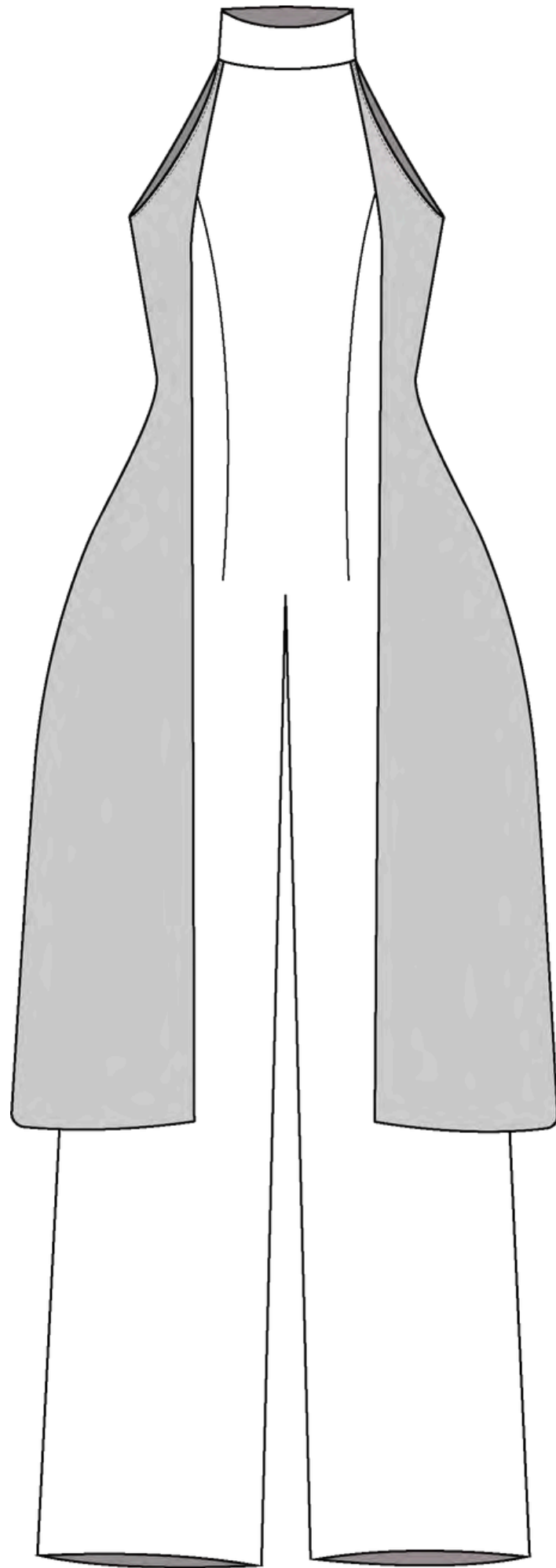


Close ended zipper

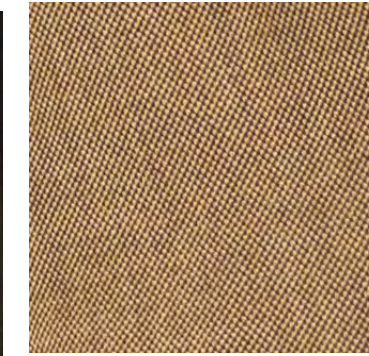


Jean button

# LOOK 4 : THE ENTREPRENEUR



80% cotton  
20% poly



50% wool  
30% cotton  
20% cotton



Wool  
Fuse



Acetate

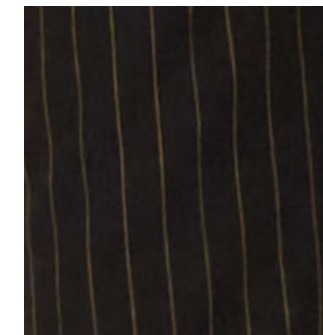
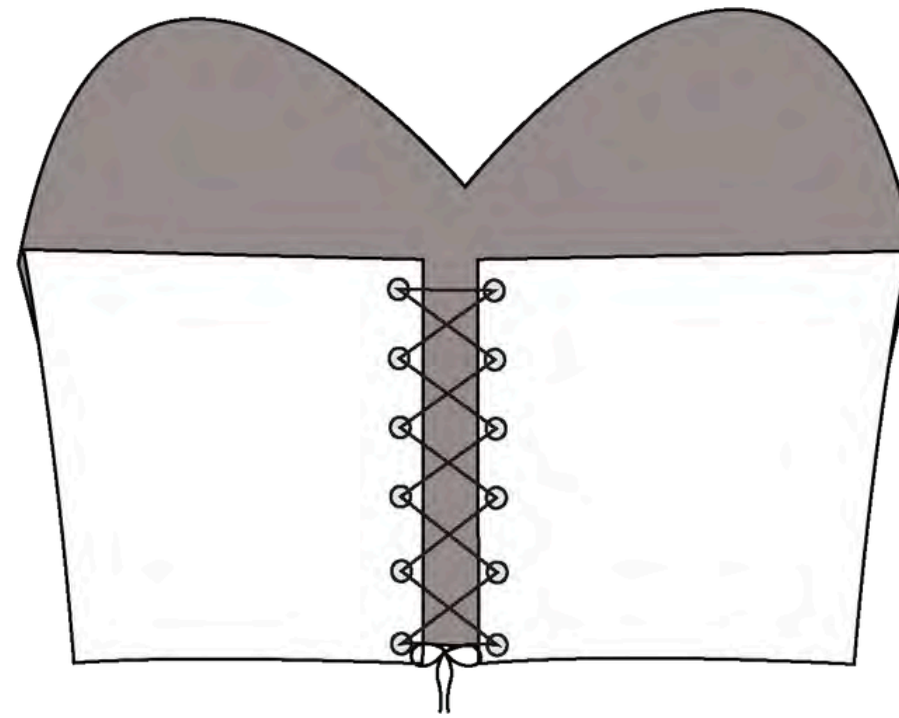
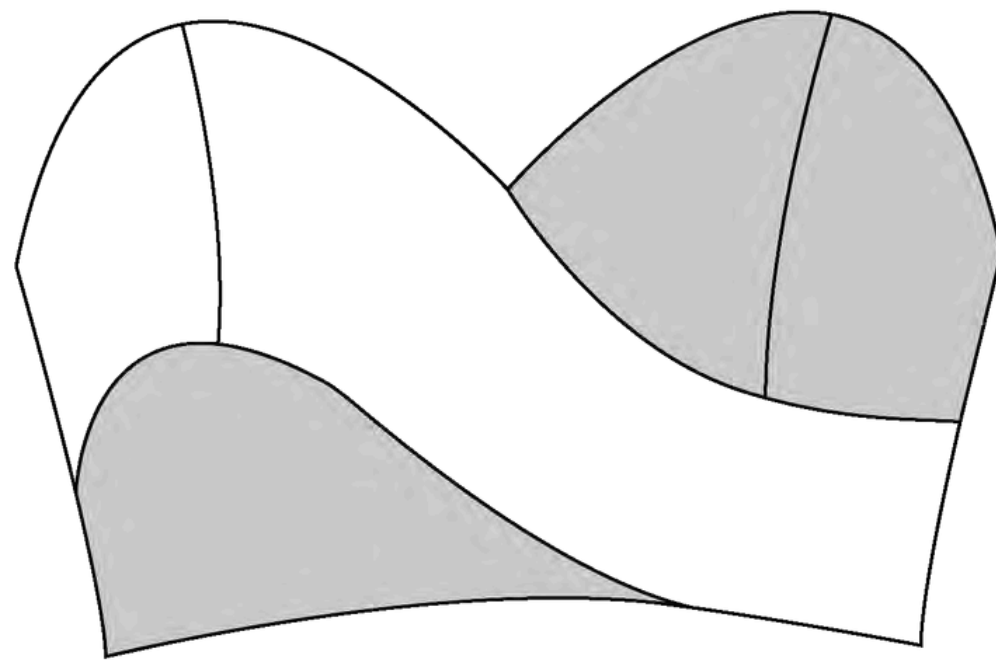


Bronze eyelets

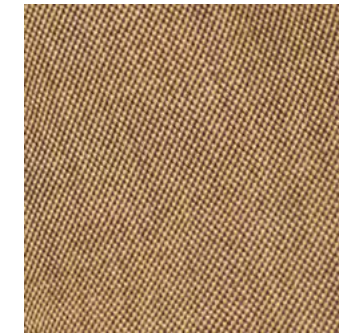


Bronze snaps

# LOOK 5 GARMENT 1: THE BOSS



80% cotton  
20% poly



50% wool  
30% cotton  
20% cotton

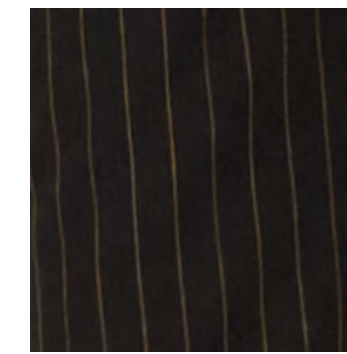
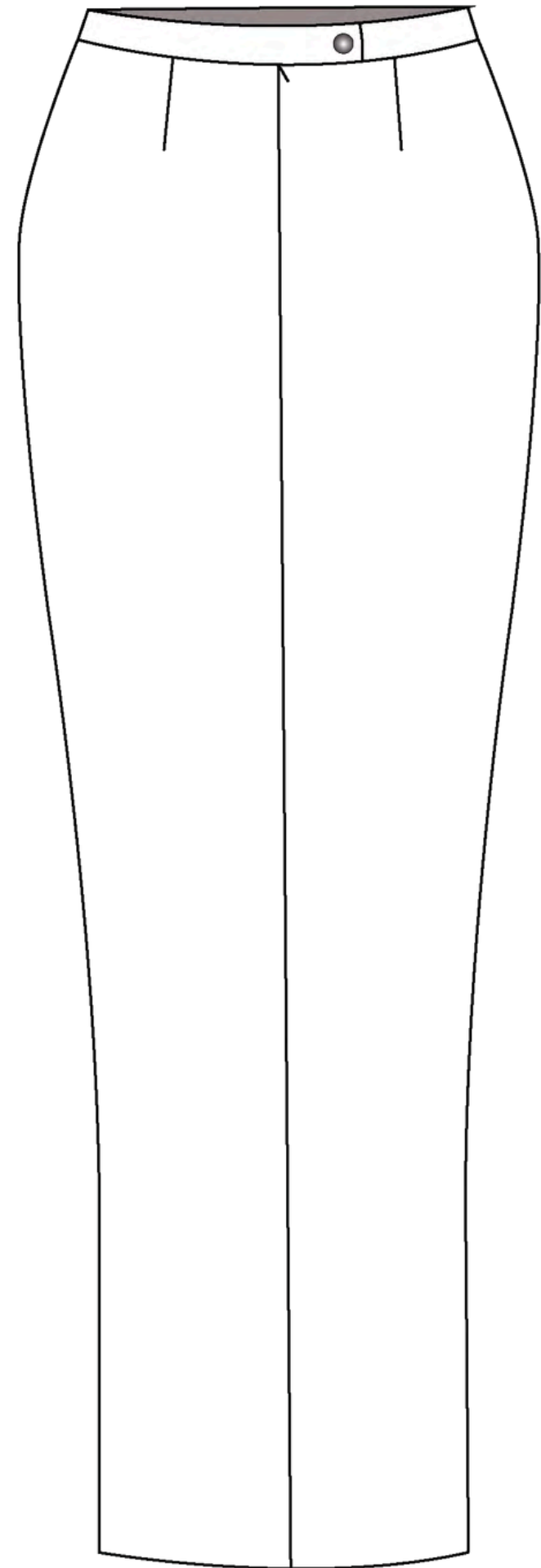
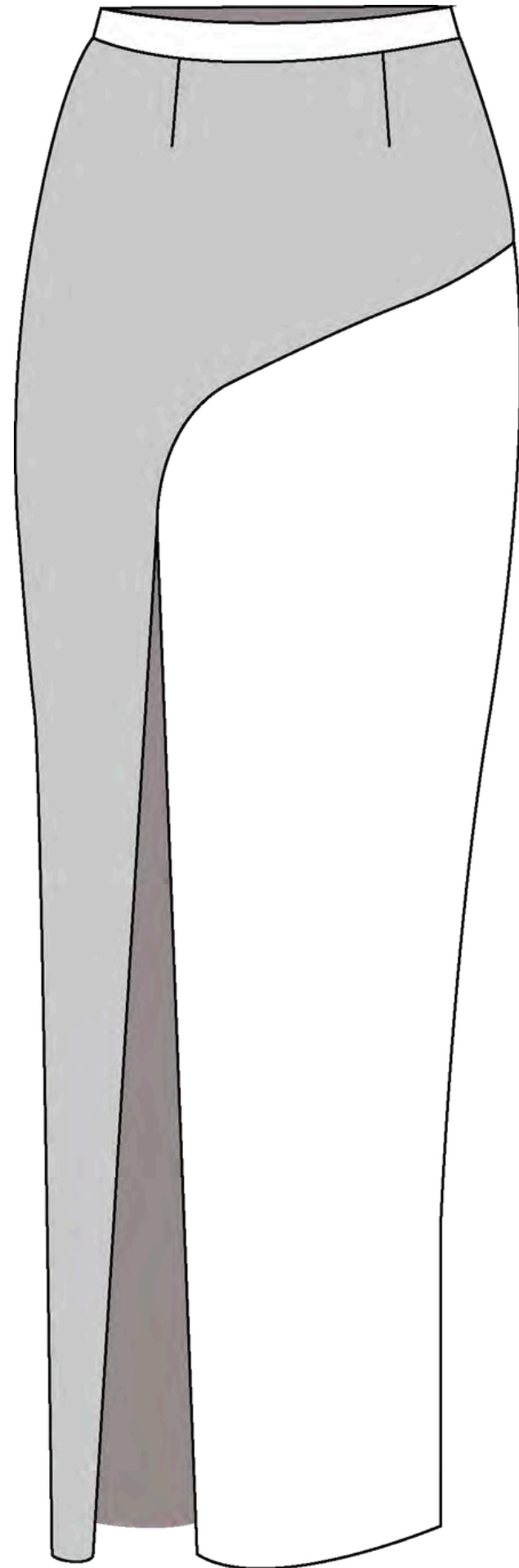


Wool  
Fuse

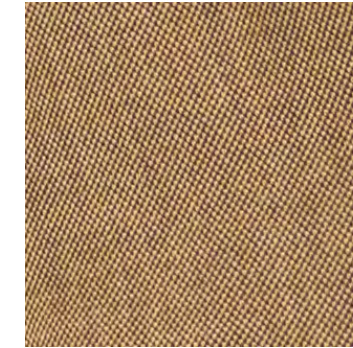


Bronze eyelets

# LOOK 5 GARMENT 1 : THE BOSS LADY



80% cotton  
20% poly



50% wool  
30% cotton  
20% cotton



Wool  
Fuse

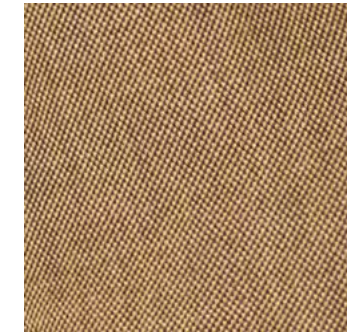
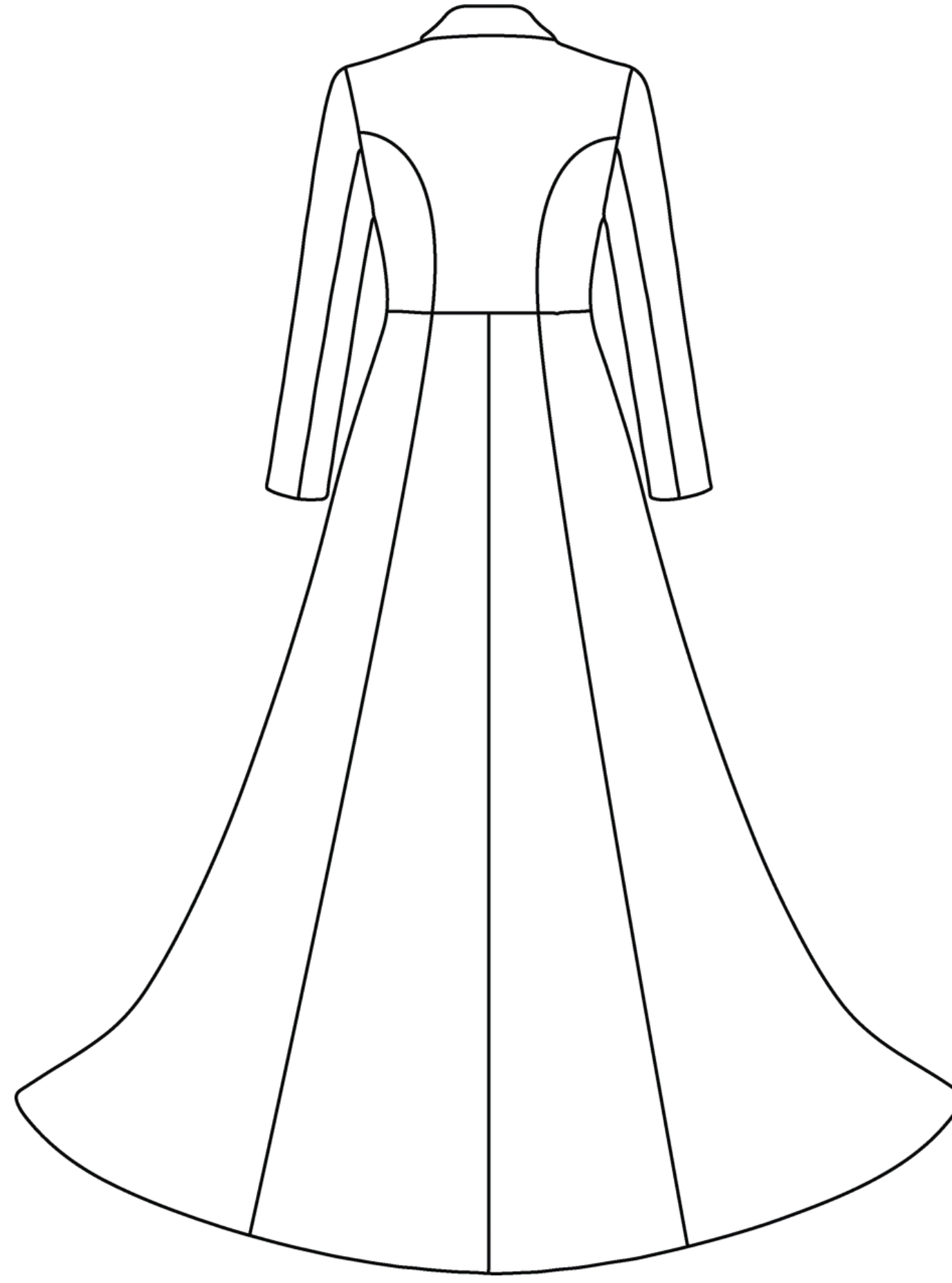
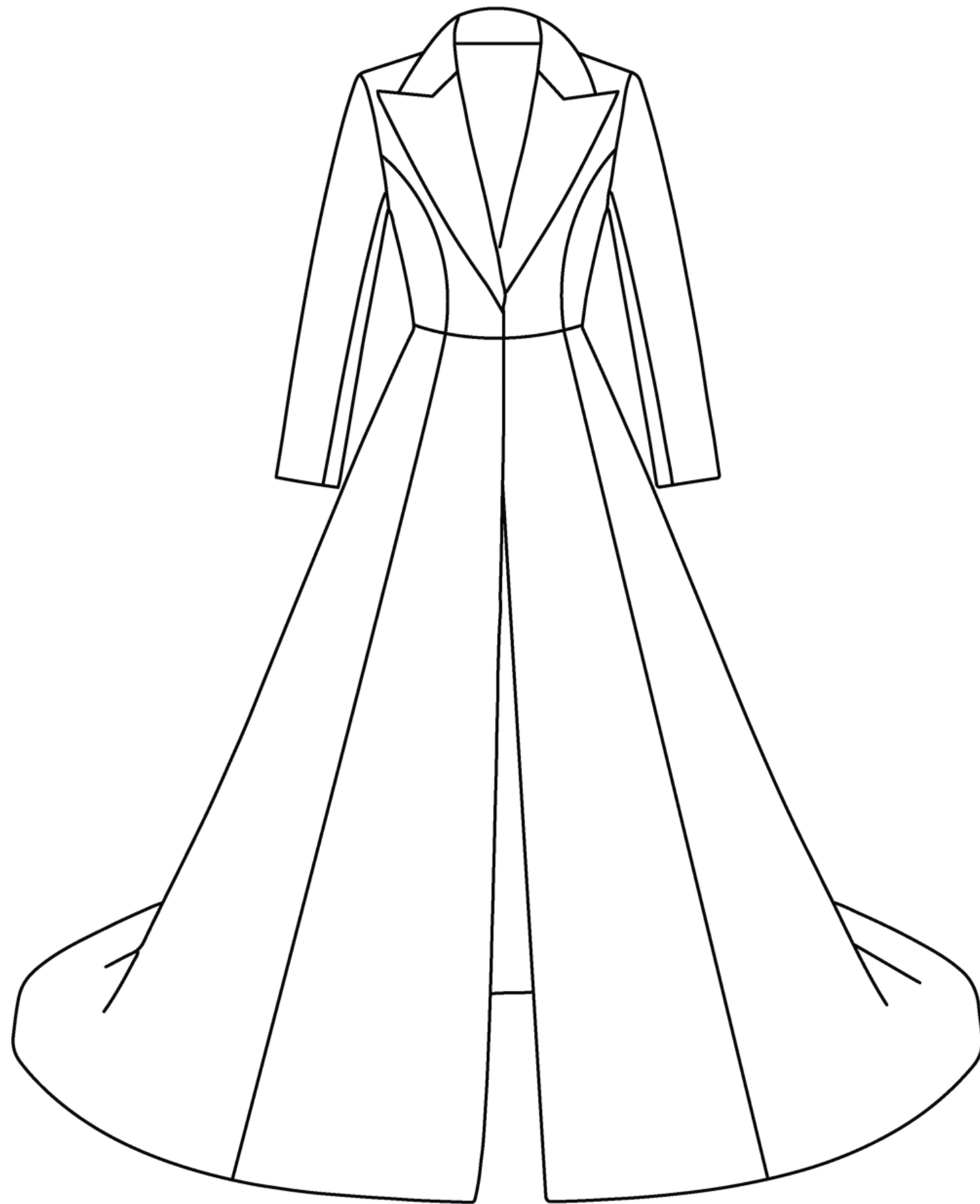


Bronze snaps



Invisible zipper

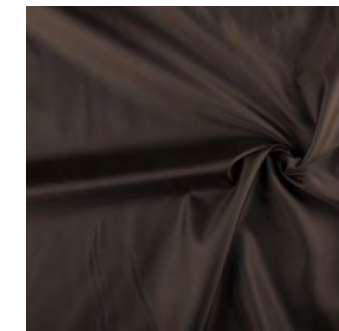
# LOOK 5 GARMENT 3: TOP DOG



50% wool  
30% cotton  
20% cotton



Wool  
Fuse



Acetate













**THANK YOU**