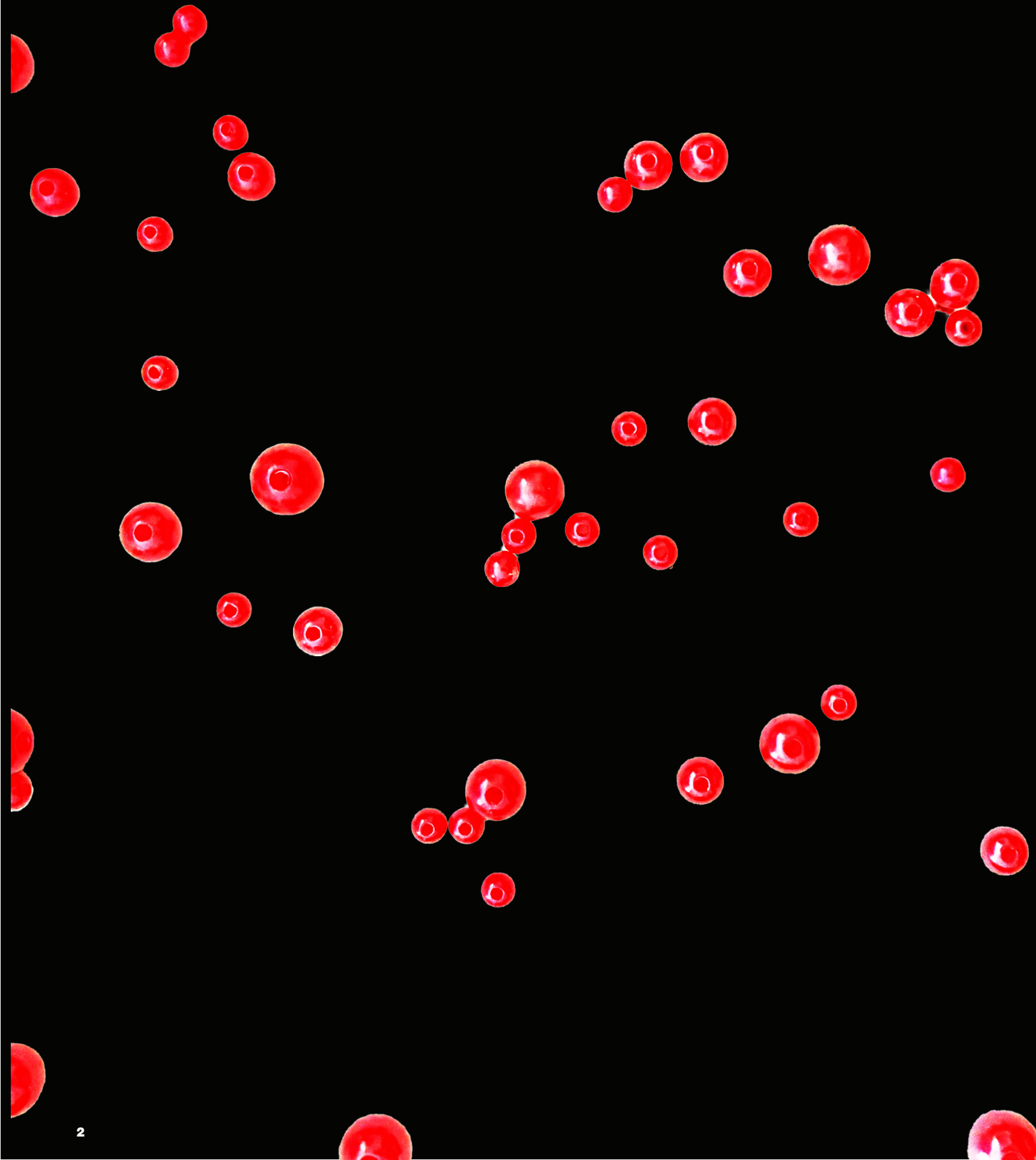




THE VOID



THE VOID

AN ENDLESS CYCLE OF SILENCE,
FEELING LOST AND STUCK.

By Ria Bailey

The Void focuses on the emptiness, emotional absence, and numbness a person experiences throughout their life. A personal tribute to the loneliness I have experienced growing up in a world full of people feeling stuck and unable to move forward. As humans, we experience periods of stagnation where we are neither happy nor sad, but right in the middle, feeling emotionless. This feeling can be tiring, draining, and isolating, as we do everything in our power to move forward, yet the void pulls us with no hope of escape. This project is expressed through deep blacks, muted grays, negative space in garments, embellishments, and textures that suggest fragility and the tension of being stuck in the void. My collection is a personal tribute to the loneliness and fragility I have experienced, and its fragments transform internal absence into external form, serving as gateways for vessels of silence and expression.

STENTS FOR THE VOID



7

BLEEDING SOMETHING,
BUT WHAT IS IT?

The emotional absence being carried and weight of never moving forward.

HANGING ON BY A THREAD

The emotional absence being carried and weight of never moving forward.



31



57

TOGETHERNESS

The emotional absence being carried and weight of never moving forward.






BLEEDING SOMETHING, BUT WHAT IS IT?

THE WOUND THAT WAITS...

This piece embodies the void as a wound that refuses to close. The red beading traces slow, continuous bleeding not of violence, but of absence. It reflects the quiet exhaustion of reeling stuck, where healing never arrives and time does not move forward. The body becomes a vessel, holding an open space where emotion once lived. In the void, even pain softens into something constant, something still.







**“I FEEL AS
IF I’M CON-
STANTLY
BLEEDING
SOMETHING.
IT’S THICK
AND WEIGHS
ME DOWN”
— RIA BAILEY**

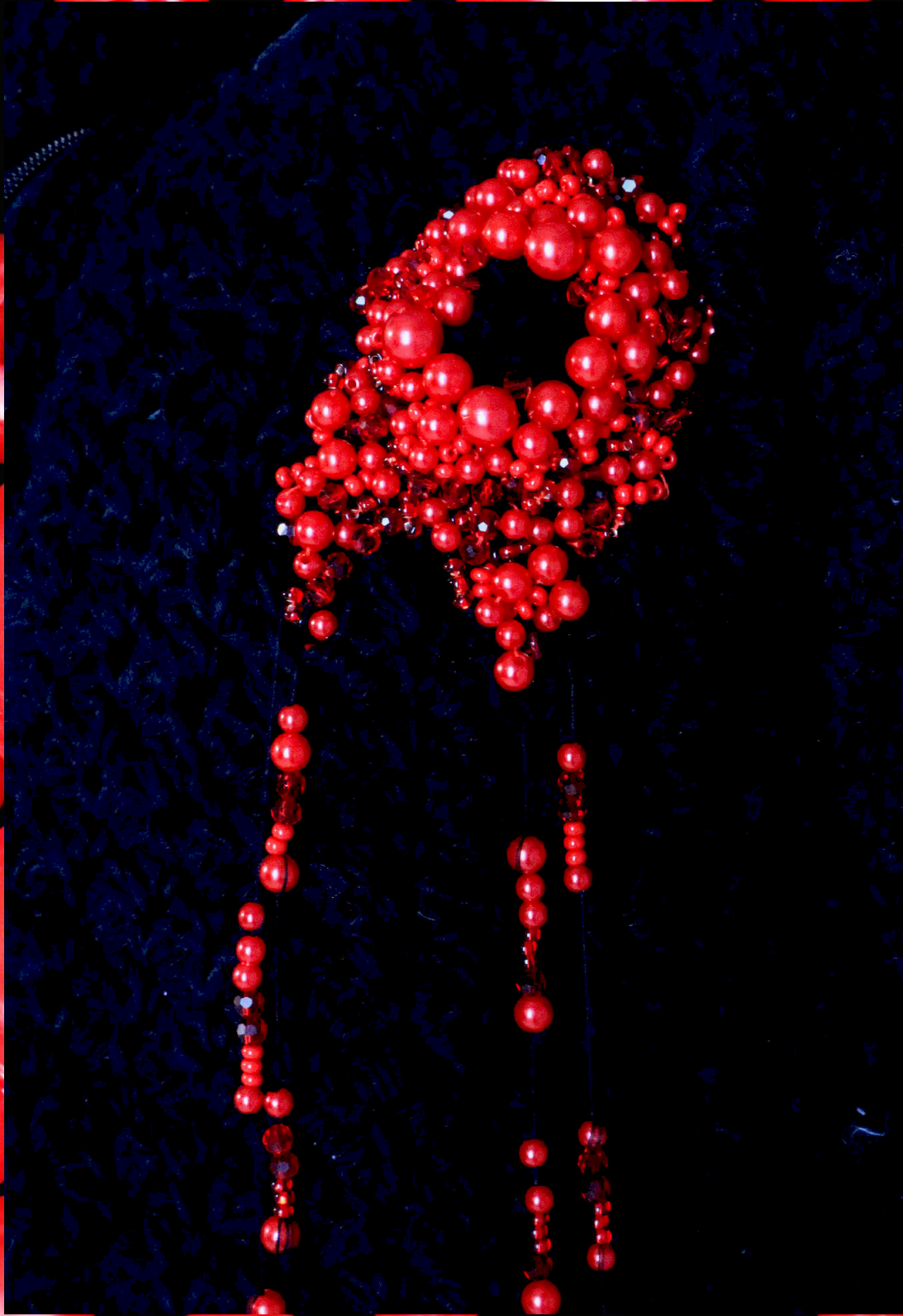






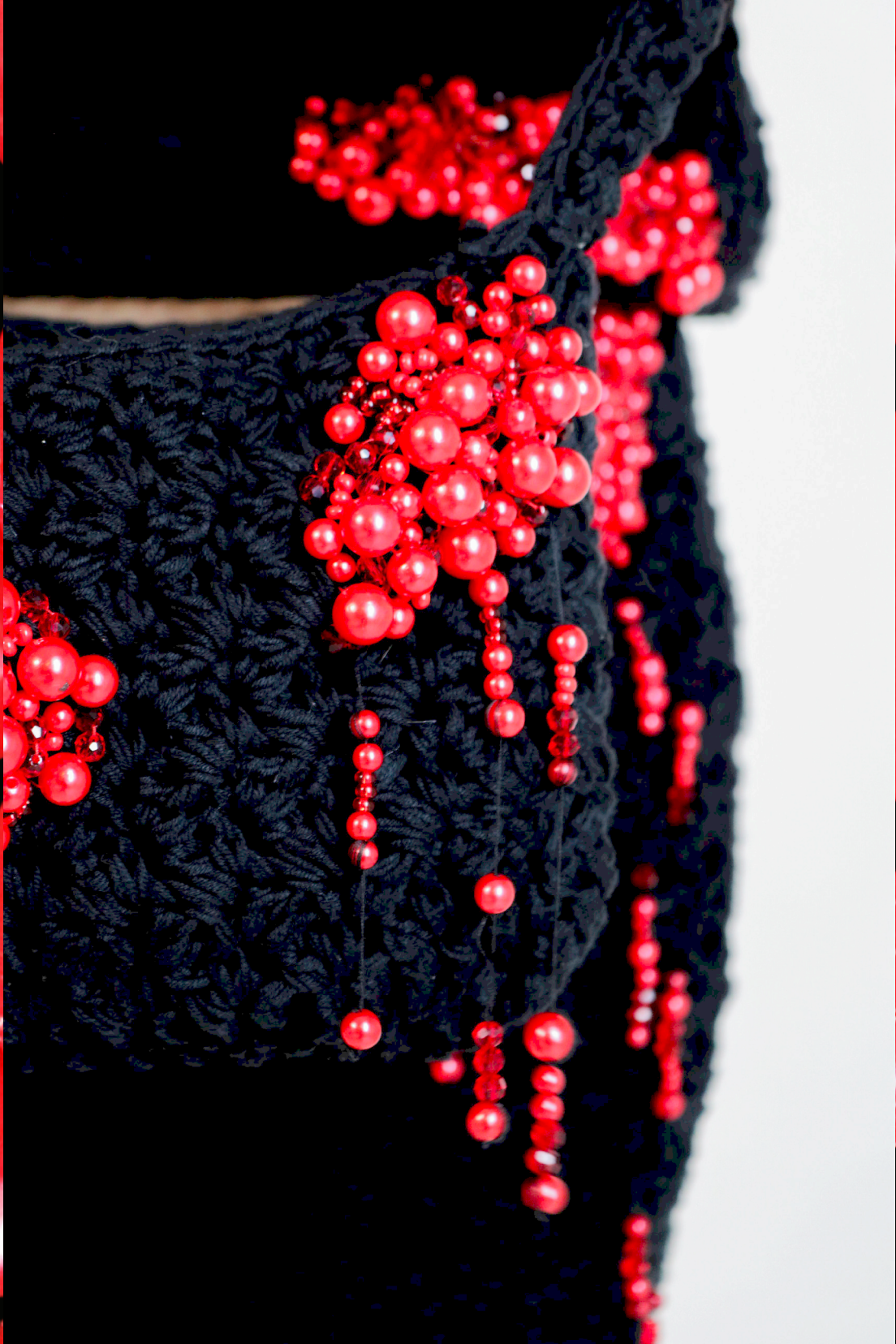
**“AS THIS PAINS
BLEEDS OUT OF
ME ALL I CAN
THINK OF IS
WHEN IT RAINS,
IT POURS, AND
MY PAIN OF NO
ESCAPE POURS
HEAVILY”**

—RIA BAILEY

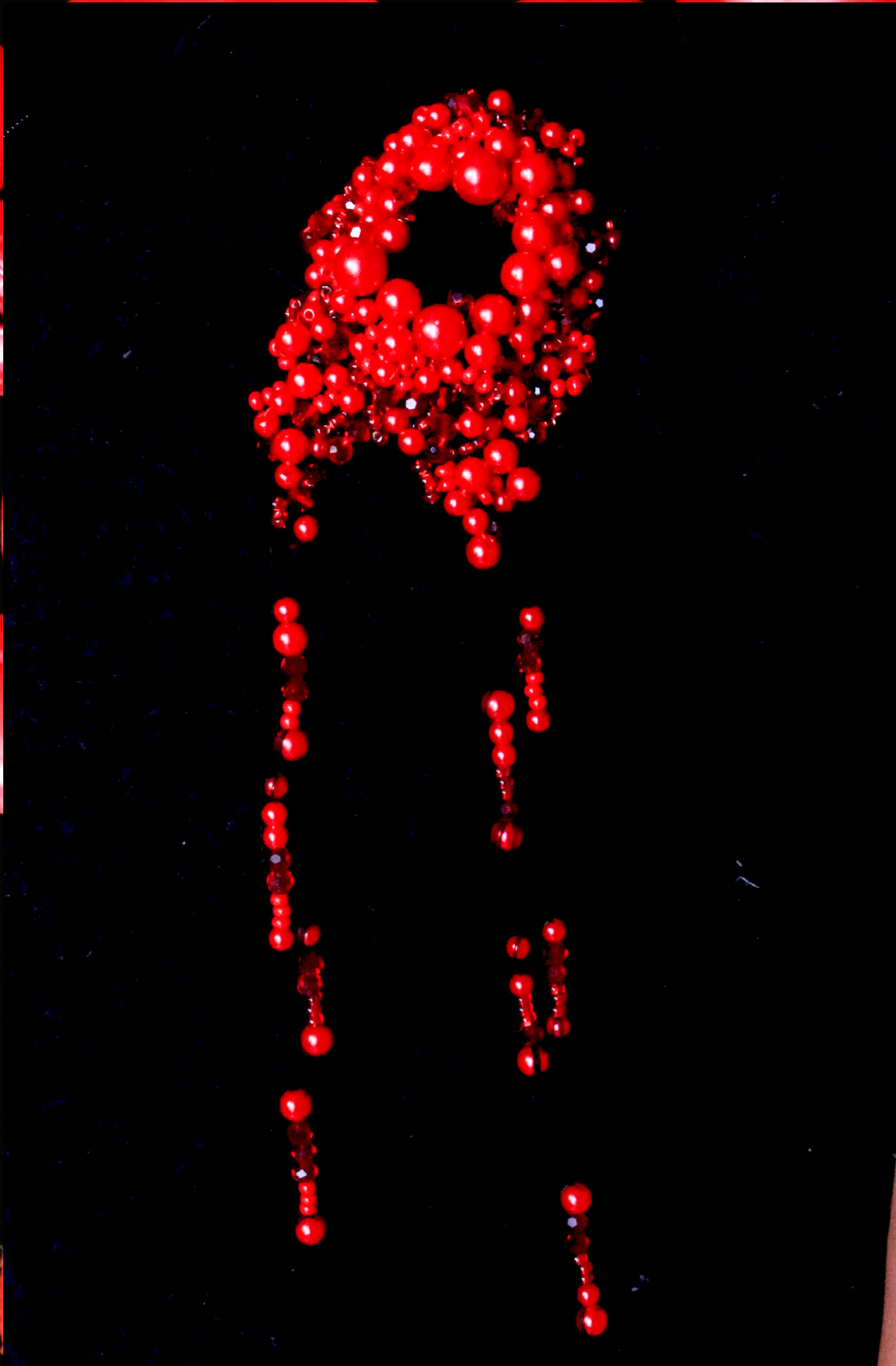


































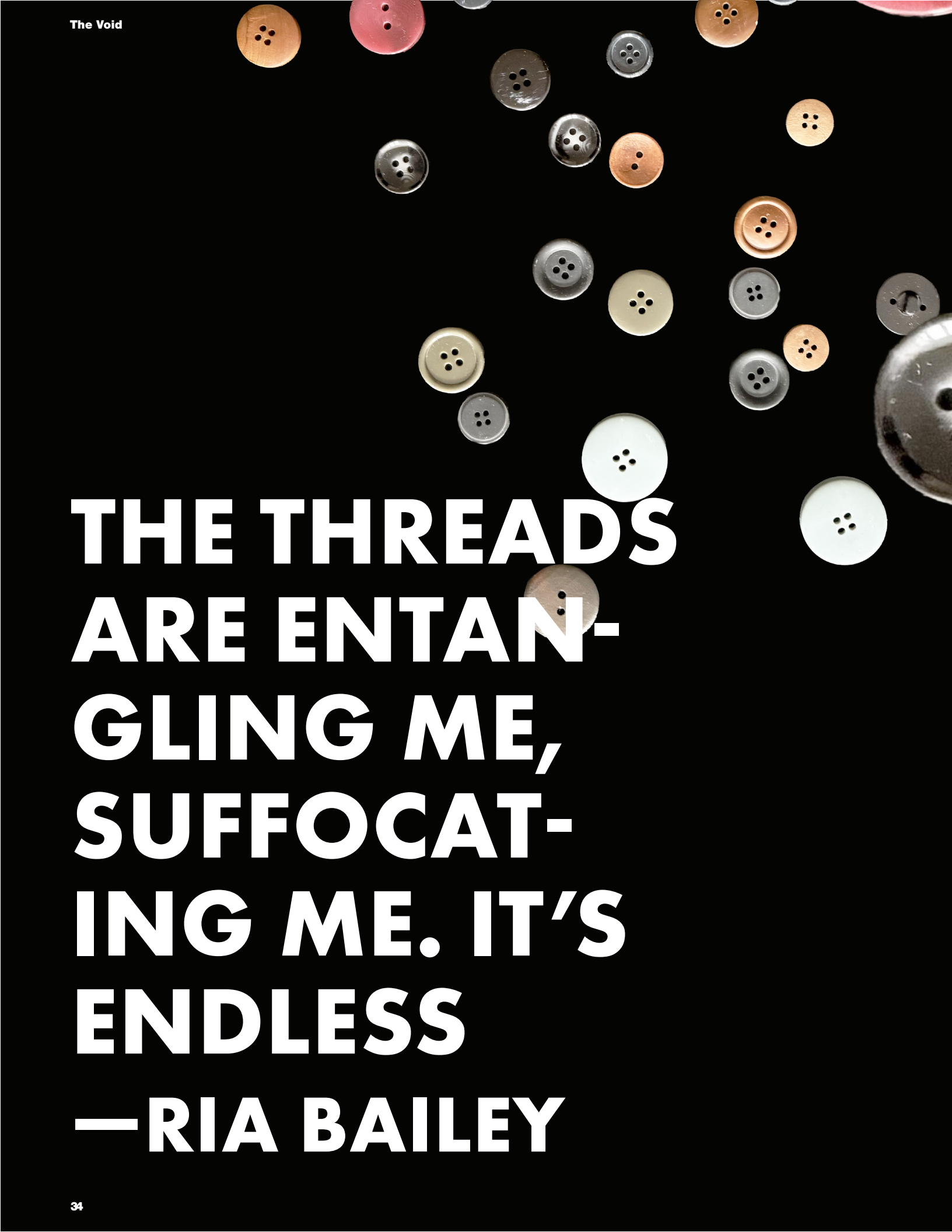
HANGING ON BY A THREAD

A CONSTANT WEIGHT THAT RESUSES TO BREAK...

This piece embodies the emotional weights of emotions that lingers in the void. The buttons are thoughts and feelings exhibited in the void that forever stagnant with no way forward. The thread present a sort of chaos that is impossible to escape as it encloses ones body.







**THE THREADS
ARE ENTAN-
GLING ME,
SUFFOCAT-
ING ME. IT'S
ENDLESS
—RIA BAILEY**

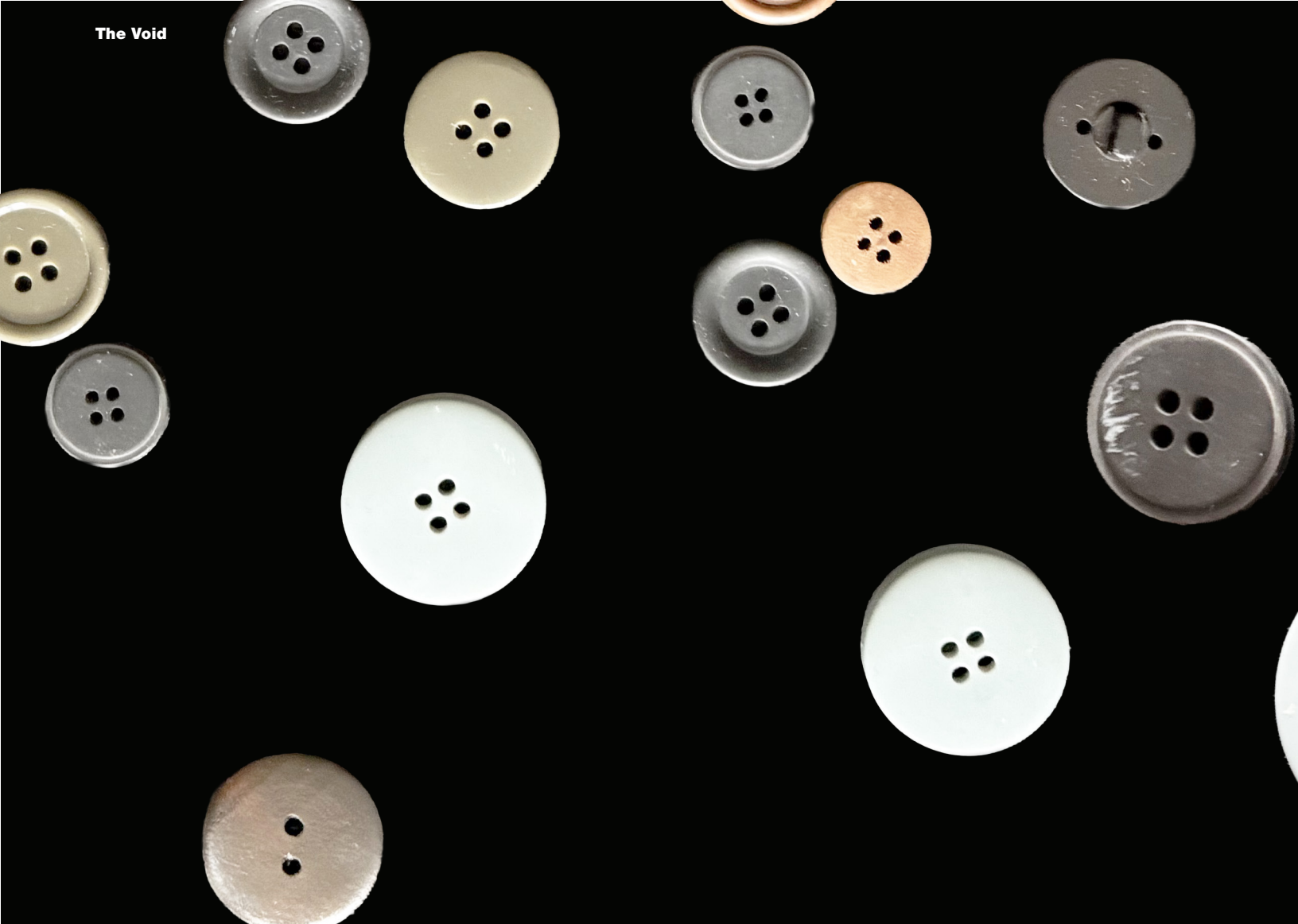












**“I’M IN THIS
ENDLESS CYCLE
OF GOING
NOWHERE”.**

—RIA BAILEY



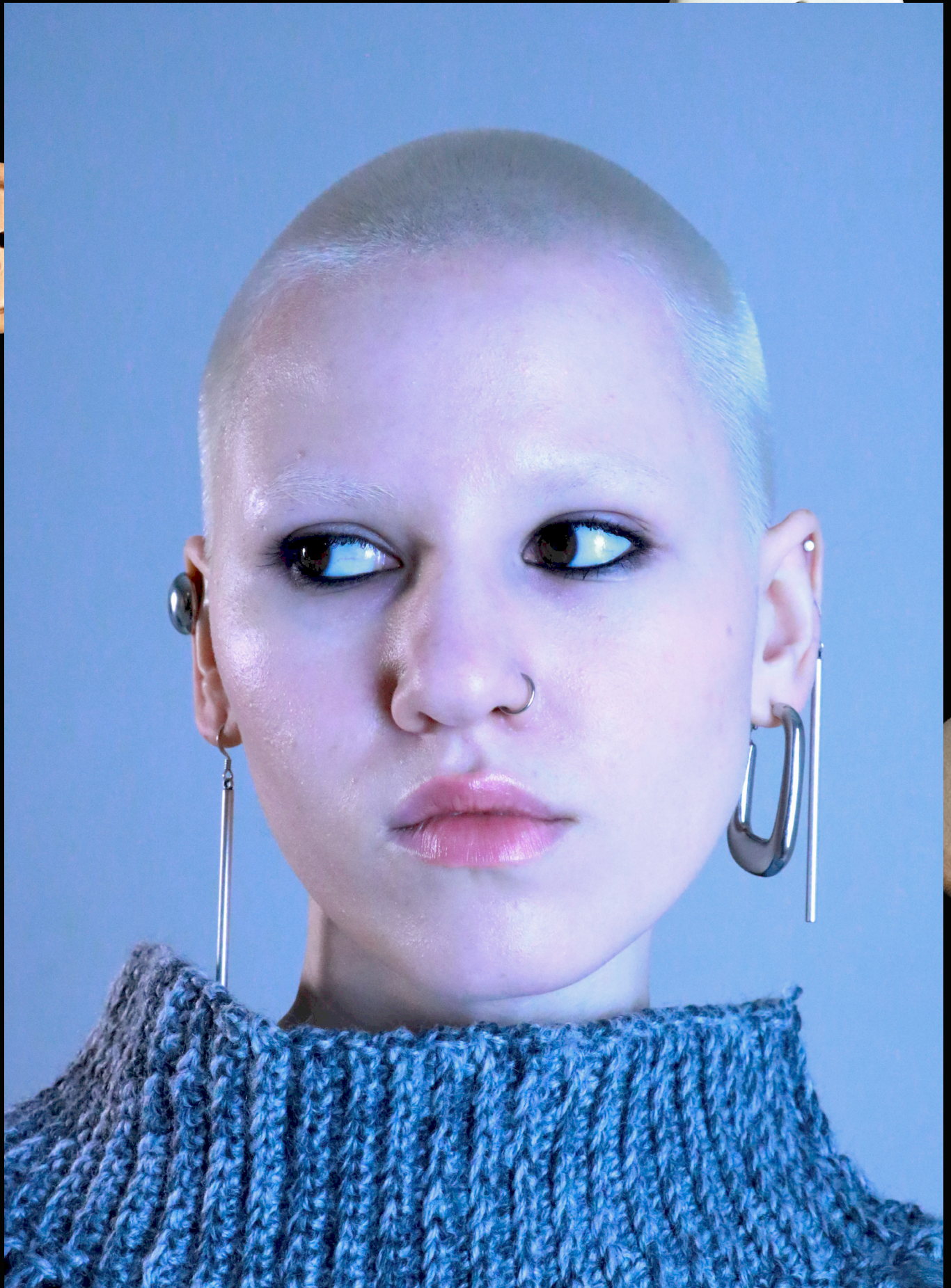
































TOGETHERNESS

THE EMOTIONAL ABSENCE BEING CARRIED AND
WEIGHT OF NEVER MOVING FORWARD...

Two feelings come together. They push, they pull, but never escape one another. It is constant battle to feel and move forward but they pull each other back into the void where it all starts.





















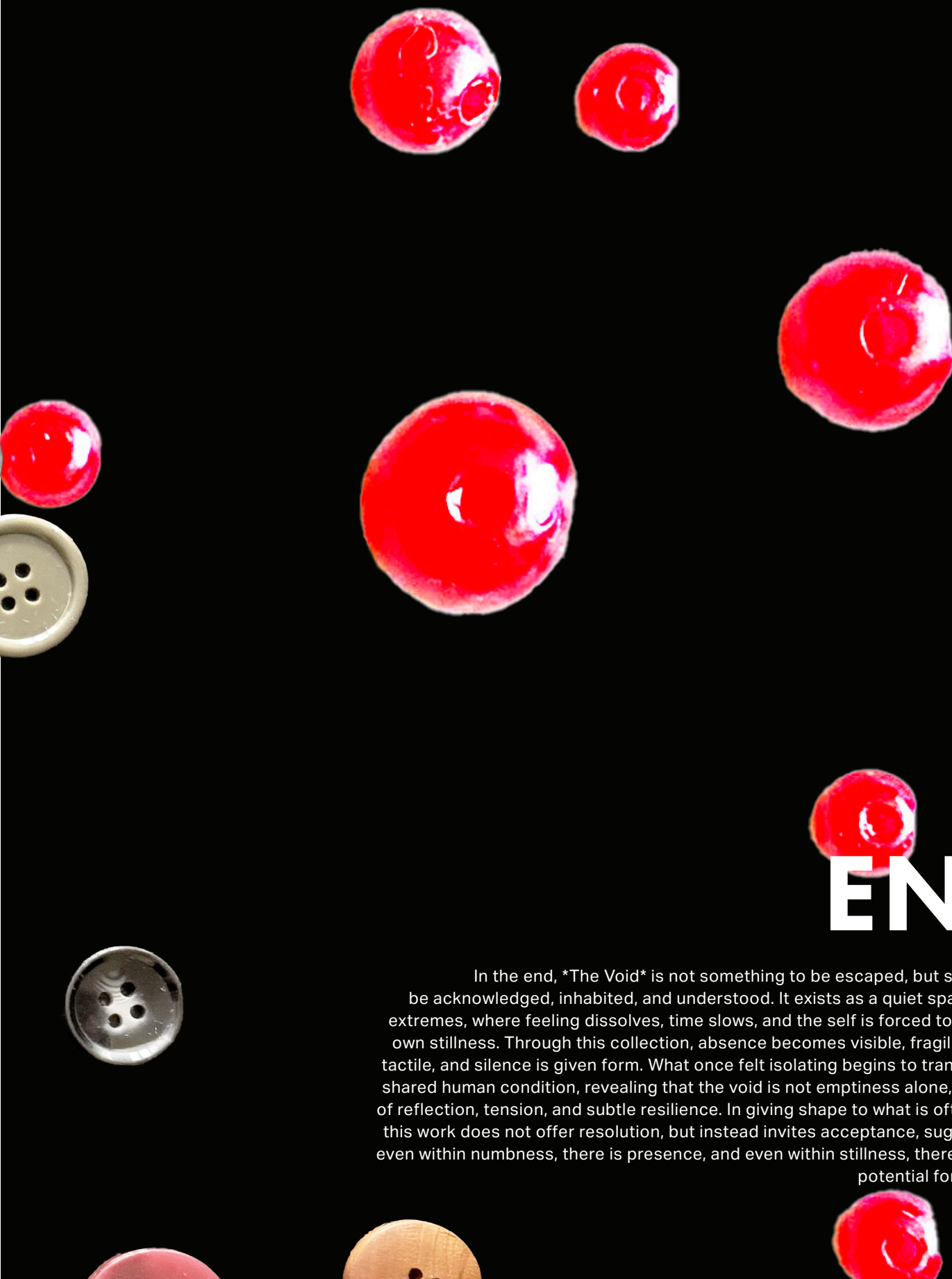












END

In the end, *The Void* is not something to be escaped, but something to be acknowledged, inhabited, and understood. It exists as a quiet space between extremes, where feeling dissolves, time slows, and the self is forced to confront its own stillness. Through this collection, absence becomes visible, fragility becomes tactile, and silence is given form. What once felt isolating begins to transform into a shared human condition, revealing that the void is not emptiness alone, but a space of reflection, tension, and subtle resilience. In giving shape to what is often invisible, this work does not offer resolution, but instead invites acceptance, suggesting that even within numbness, there is presence, and even within stillness, there is the quiet potential for movement.

