

pop test choker
dress will be embroidered similarly to Trum 1

worked bracelet
could be nice also w/ a pulley trim

thumb hole
could have one on cuffs - or as bracelet

light boning on sides + see this side
negative ease for waist, positive for bust + mid

stockings + sleeves will be beaded
one can be inside-out

heel-less stockings

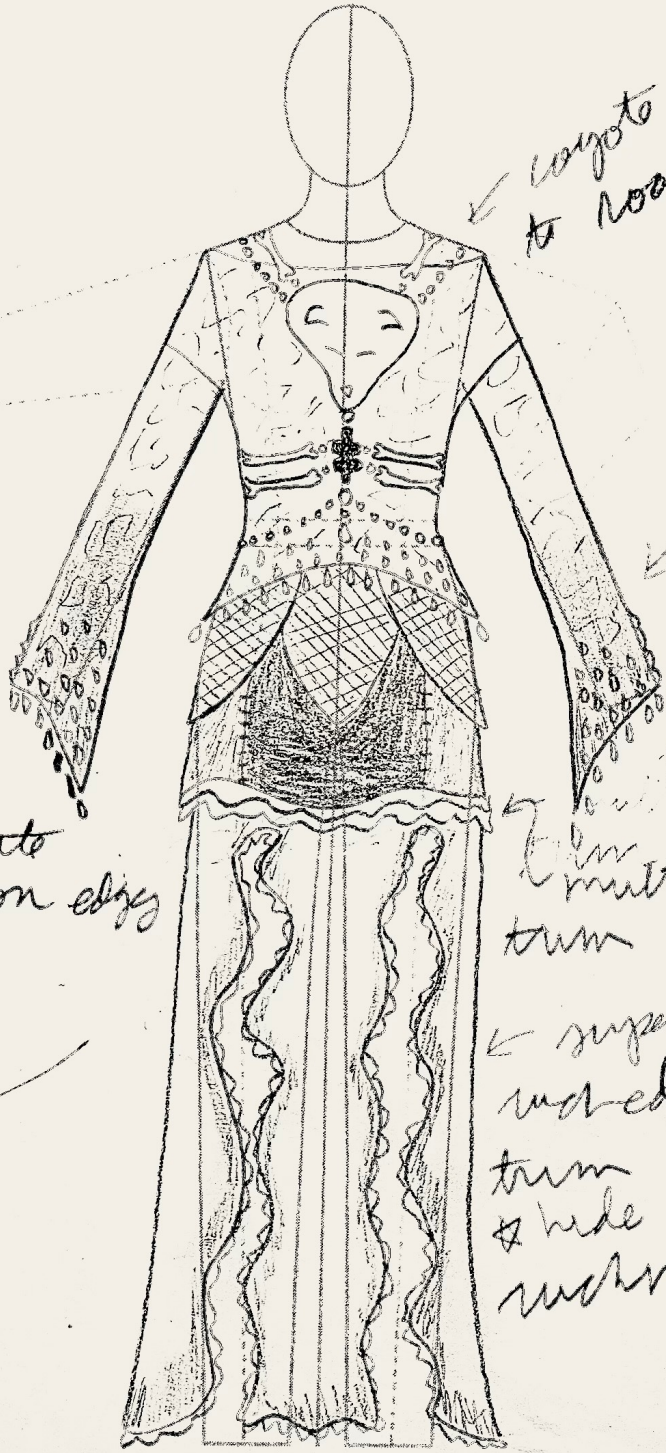


ment dye

Garment
Iron

Iron
Blotchy-tie resists

bro



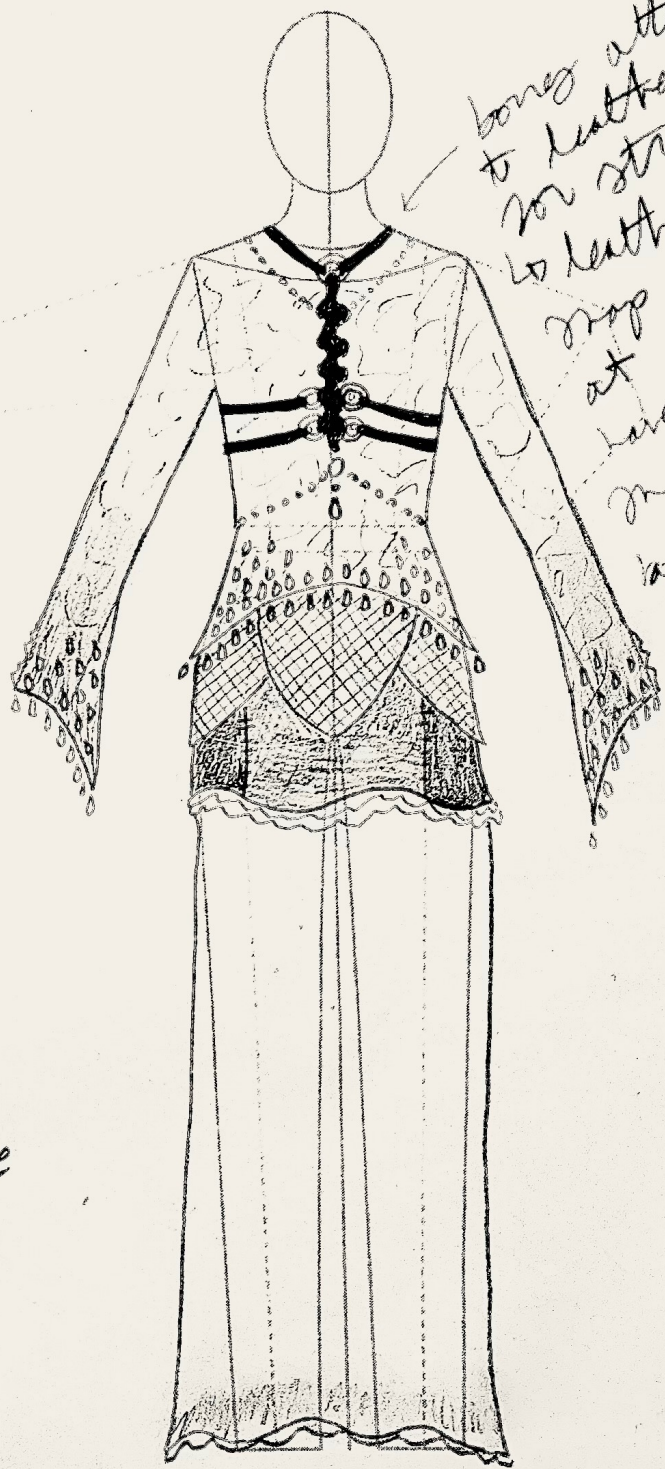
← corset embellished to look hooded

← dip dye action on sweater + pant

← multi-layered trim

← super shear, washed, fully trim & hide seams above rucking spots

↑ concentrate weight on edge



← bones attached to leather strips for strength to leather pieces drop on/off at back have a few maps to adjust



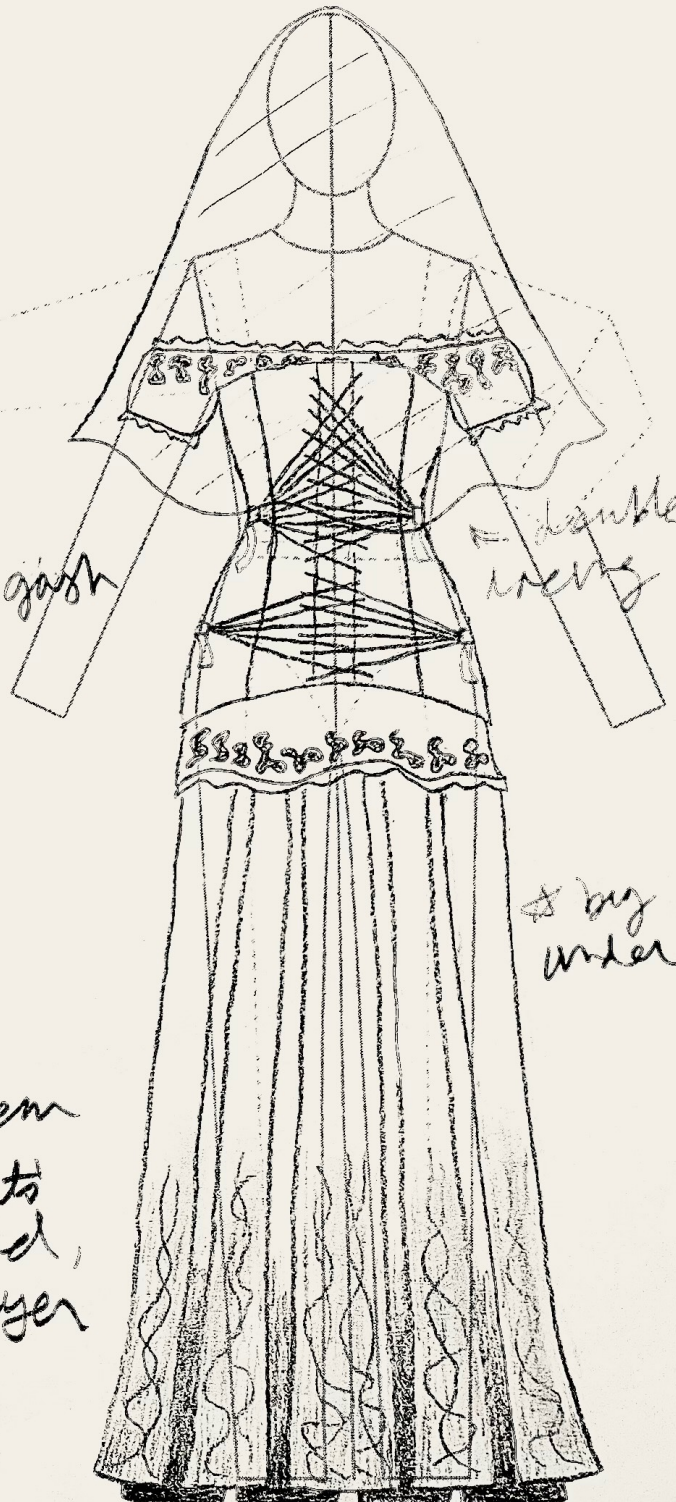


bones
visible
throughout,
back at
front

← puts all trail
to ground, body
embroidered around gash
but under mesh

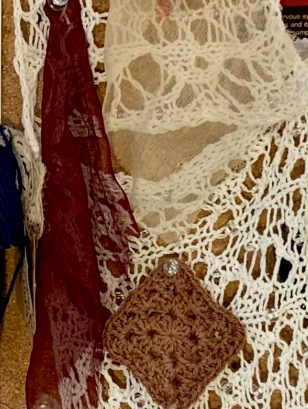
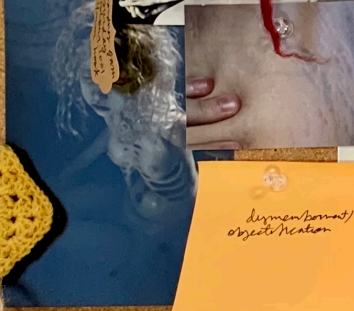
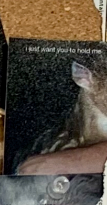
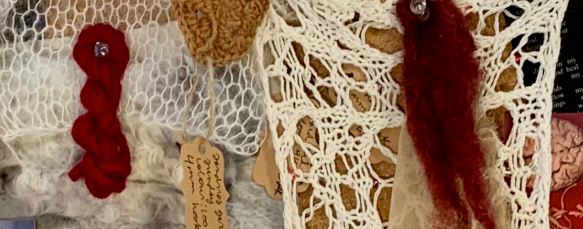
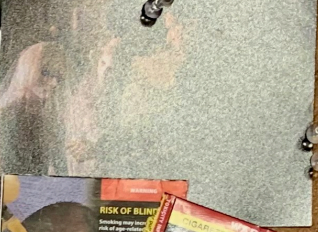
← bottom mesh layers
looking out or full
is brightly coloured

← no printing at hem
so it looks like its
troubled in the mud,
darker underlayer



← handle in
mesh

← big patch
under skirt



Dimension/sonnet/ orsels/creation

Small handwritten tag with illegible text.

Small handwritten tag with illegible text.

Small handwritten tag with illegible text.

Small handwritten tag with illegible text.

Small handwritten tag with illegible text.



Handwritten text on a piece of fabric: 'FOR THE DES... OF THE... ME...'

