

WHILE THERE IS STILL TIME



CAPSTONE COLLECTION

F/W 2026

THEODORA ETOKIMO

Preliminary Creative Information Package

*While There Is Still Time:
His Vessel*

Copyright © 2025 Theodora Etokimo. All rights reserved.



Overview

1. COLLECTION DISTINCTION
2. PRELIMINARY LINEUP
3. STYLING MOOD BOARDS
4. ART DIRECTION
5. SHOOT LOCATIONS
6. COLLABORATORS



Collection Distinction

This collection is a prophetic warning rendered through fashion—an urgent call issued to a generation distracted. While much of fashion seeks only to adorn or provoke, this work confronts the viewer with stillness, asking them to see, to reckon, and to respond. The Gospel is woven through symbolism rather than speech, making the message inescapable yet unforced. Black, crimson, and ivory mark the passage from darkness into marvellous light, revealing the transformation offered in Christ. Created while there is still time, this collection exists because the call must be answered, whether acknowledged or ignored.

COLLECTION DISTINCTION

THEME

Urgency, warning, and revelation; A call to respond.

MESSAGE

This collection functions as both warning and invitation. It confronts unbelief while extending grace, drawing attention to the nearness of the end of the age and God's persistent call to His people. Through fashion, it asks the viewer not simply to observe, but to consider and respond.

EXPRESSION

Created as a mid to plus-size evening and event-wear collection, the garments act as vessels of meaning rather than adornment. Symbolism replaces speech, allowing the Gospel to be encountered visually and emotionally without theatrics.

Black, crimson, and ivory trace a narrative of darkness, sacrifice, and redemption, reflecting the transformation available through Christ. Each look is designed to provoke curiosity and conversation, serving as a quiet yet insistent call: God is calling, and the time to answer is now.



God is calling — the question is whether we will answer.



COLLECTION DISTINCTION

HIS VESSEL

Original Song By Theodora Etokimo

Verse 1

Let your spirit flow
You said in the last days you'd pour out yourself upon all flesh
Your return is coming now
Your return is coming now
But we aren't ready
We still need time to fall in line,
We still need time to save these souls
They don't know who you are
The Devil is running rampant with confusion

Verse 2

Shine your light in me
Make me the reflection of your perfect love
Oh, The world needs Jesus now
Yes, The world needs Jesus now
But they reject you
How am I to express your love?
The blood you shed on the cross
They're lost and in the dark
The Devil is running rampant with deception

Chorus

Sometimes, we ice them out, thinking that
The cold is good, but it's so bad
They need to feel the warmth of love
They need to know that they are loved
They don't know who they are
They're called to be your sons and daughters

Bridge

LORD pour tears out in my vessel
This flesh is weak, but still I'll wrestle
To be your voice and call them special
We Christian's need to stop this rebel
Show them kindness now, especially
Now that we're in crisis

COLLECTION DISTINCTION

CREATIVE INTENT

This campaign is cinematic, confrontational yet intimate, rooted in tension and unresolve. Through dissonance, motion, static, and long exposure blur, the imagery reflects the inner unrest of being called before choosing to answer.

The subject remains still and unwavering, making direct eye contact with the camera while the world around her moves, blurs, and passes by.

Long exposure and motion are used to create dissonance: the tension between clarity and chaos, conviction and distraction. The camera does not simply observe; it confronts the viewer, placing them in the position of being addressed rather than watching from a distance.

Each image asks a question. The subject does not speak, but her presence demands a response, her eyes draw the answer from the viewer. To look away is itself an answer.

the gaze is intentional. The viewer is being confronted.



Focus
SYMBOLISM
Calling
URGENCY
Spiritual
pentana
Nearness
Witness
Emergence
Vessel
DISSONANCE
Now
PRESENT
Gaze
Stillness
Confronting
Blur
intimate

The words chosen reflect urgency, confrontation, and invitation. Together, they describe a moment of tension: being seen, called, and asked to respond. Where stillness, faith, and transformation exist alongside motion, distraction, and unrest. These words guide the emotional and spiritual tone of the collection rather than literal instruction.

COLLECTION DISTINCTION

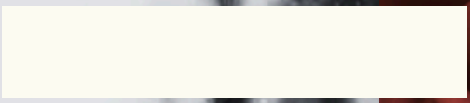
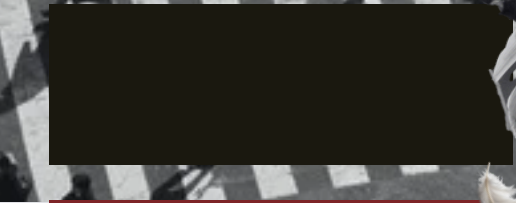
Mad Boards



This collection exists in motion and disruption. The subway car in movement, blurred figures, and gusts of wind carrying feathers and leaves represent a world in constant activity, often unaware of what is unfolding within it.

Doves in flight, floating gold crosses, and Roman architecture reference faith, sacrifice, and the enduring presence of the Church across time. Cracks in the ground blooming with roses stained by blood symbolize suffering, redemption, and new life emerging from brokenness, a visual testimony of transformation.

RANCE T ERA



Key Colour Palette

The colour palette for His Vessel reinforces the collection's spiritual narrative while maintaining visual cohesion and contrast. Crimson Redemption (#812228) evokes the blood of Christ, symbolizing salvation, sacrifice, and mercy, appearing selectively in embellishments and accents to draw focus. Ivory (#fcfbf1) represents purity and faith, forming the foundation of key garments and highlighting structural details while providing a clean backdrop for gold and red elements. Deep Black (#2d2a2b) adds grounding and depth, enhancing contrast in linings, layers, and subtle details to create visual drama. Gold accents symbolize divine glory and authority, appearing in closures, hardware, and embellishments to unify the collection and reinforce its sacred inspiration. Together, these colours create a harmonious interplay between structure and fluidity, light and shadow, and faith and expression, underscoring the narrative of divine strength and mercy woven throughout the collection.



Ivory

Mid-deep / Blood Red

Black or Deep Charcoal

Gold

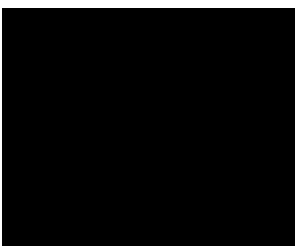
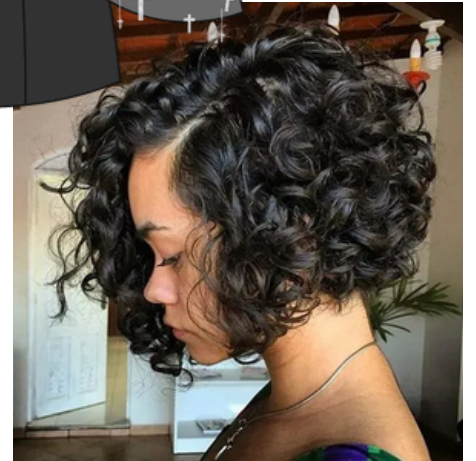
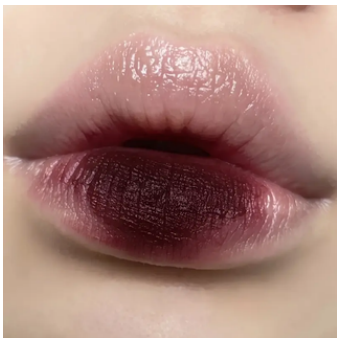
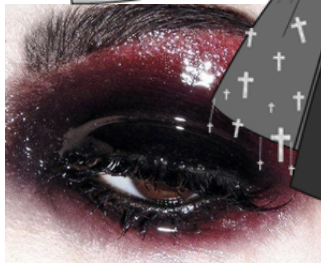
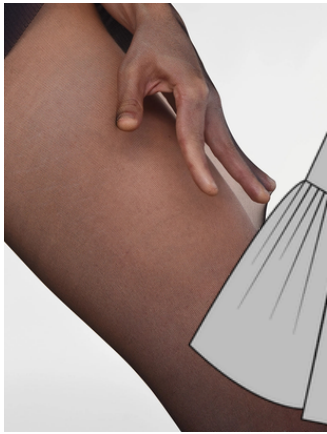
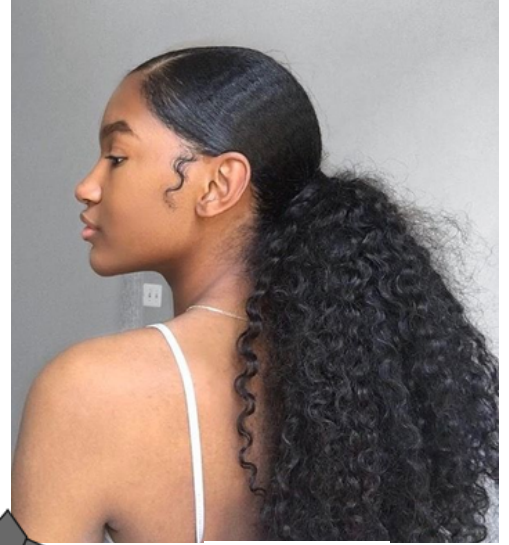


His Pessel



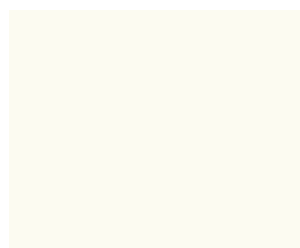
PRELIMINARY DESIGN LINE UP

CALL & CRIMSON TIDE
LOOK 1 & 2



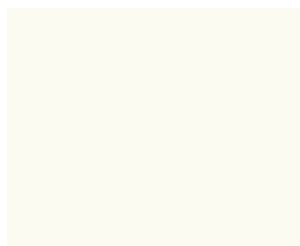
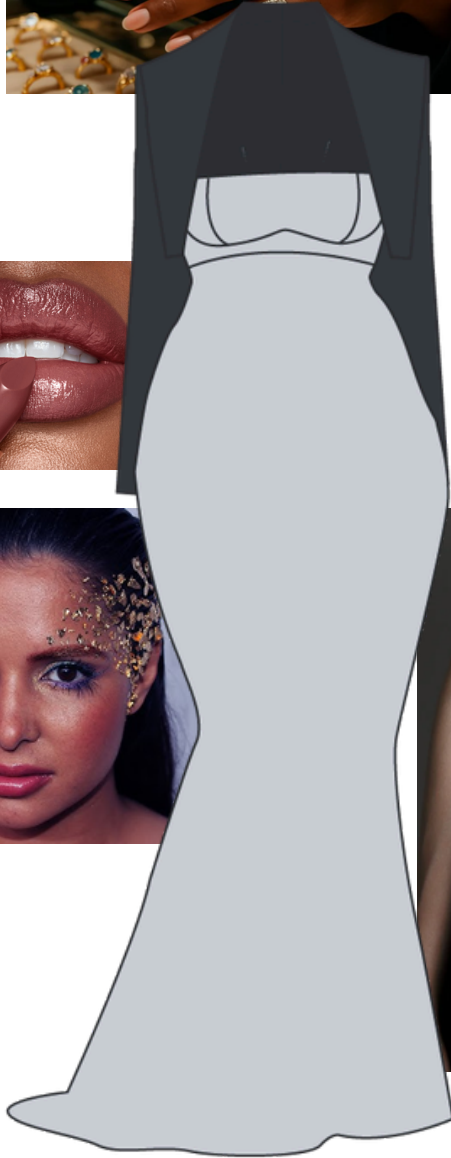
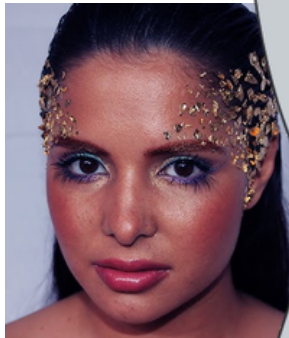
BLACK, CHAROCAL, CRIMSON, GOLD

MARKED & INCARNATE
LOOK 3 & 4



CHAROCAL, CRIMSON, IVORY, GOLD

THE BRIDE
LOOK 5



IVORY, GOLD



Best Direction

ART DIRECTION: PHOTOGRAPHY & VIDEOGRAPHY

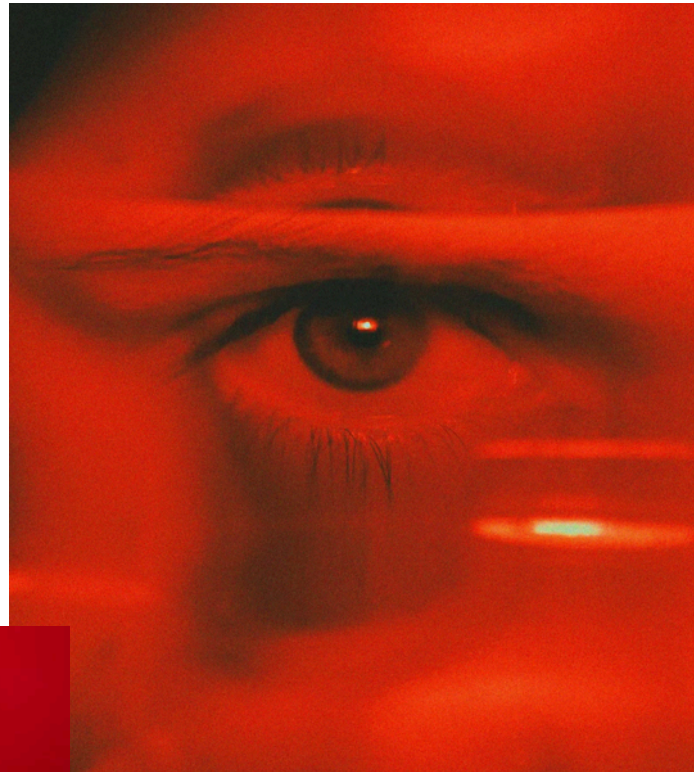
The visual language is cinematic and confrontational. Subjects wearing the collection remain still, grounded, and in direct eye contact with the camera, while the world around them moves in blur and chaos. Contrast is essential: the subject appears in colour while the surrounding environment fades into black and white, emphasizing presence amid distraction.

Light and shadow are used intentionally to cast cross silhouettes across the body. Imagery should feel intimate yet unsettling, with subjects hidden in plain sight, sometimes obscured by crowds or motion. Studio work should create the illusion of vast, open space through controlled lighting and shadow, producing eerie stills and motion-driven sequences.

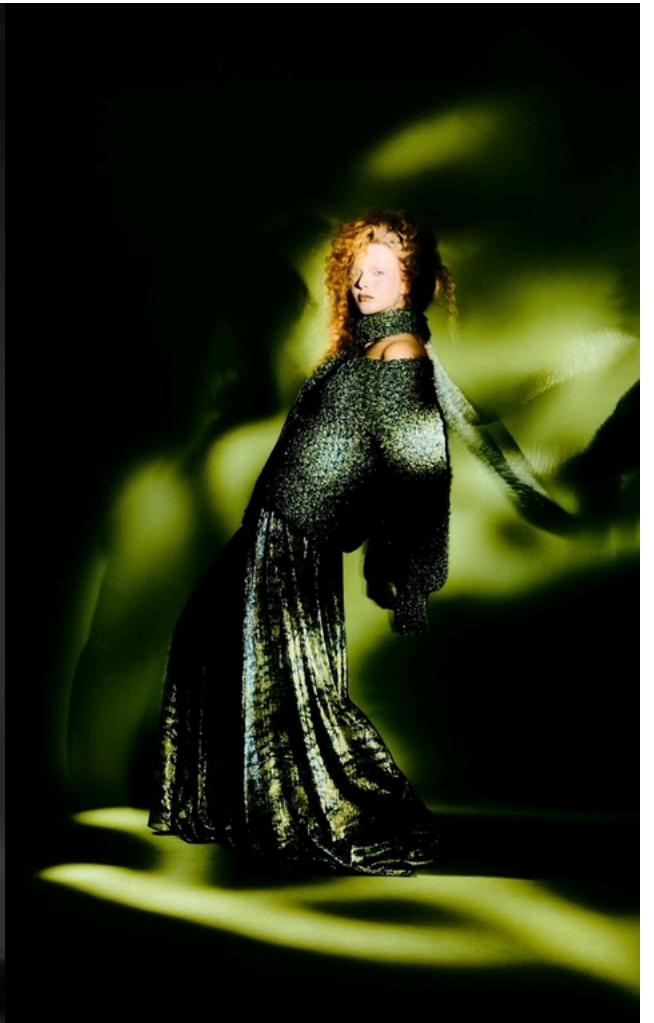
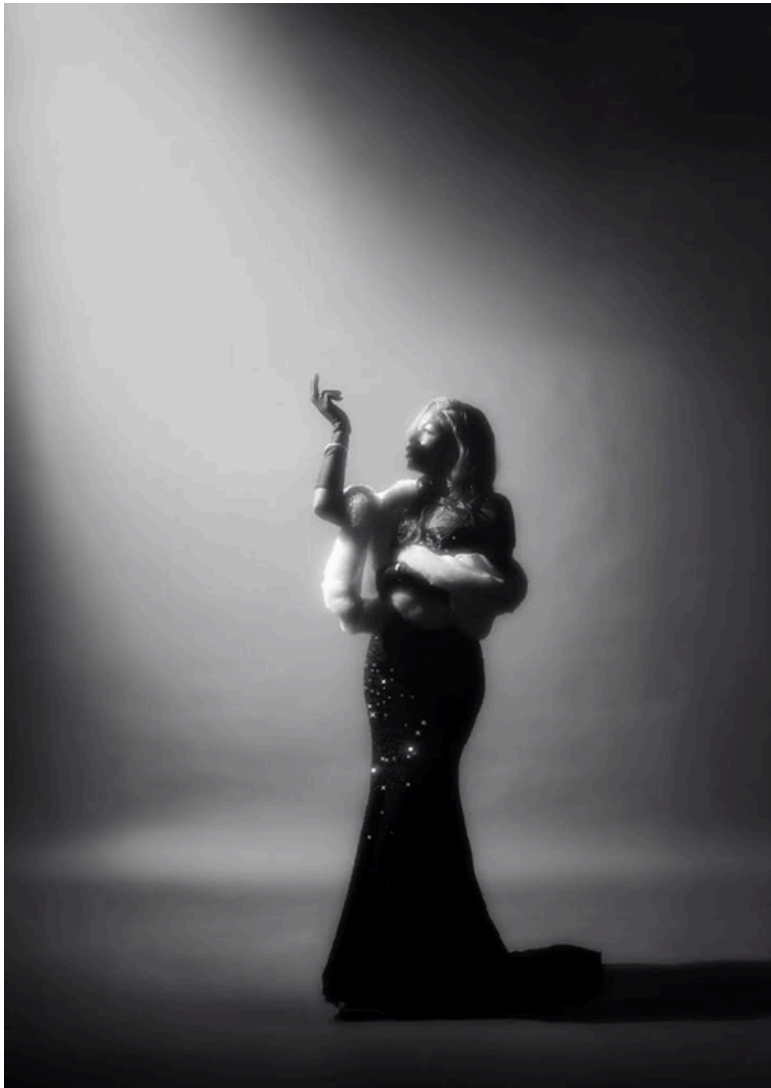
Video capture is a priority, as footage will later be repurposed for a music video for the original song *His Vessel*.



ART DIRECTION: PHOTOGRAPHY & VIDEOGRAPHY

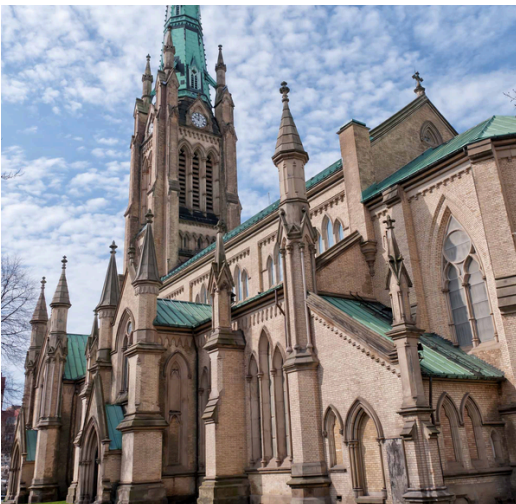
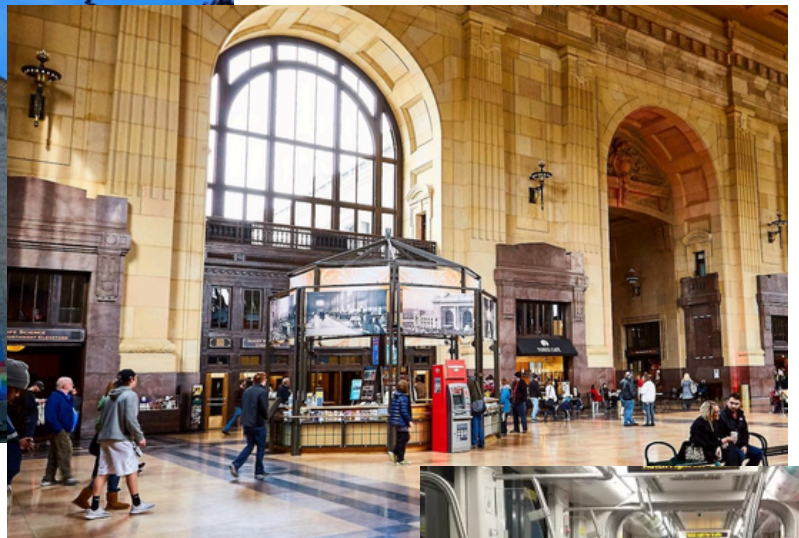


ART DIRECTION: PHOTOGRAPHY & VIDEOGRAPHY



ART DIRECTION: SHOOT LOCATIONS

ON-THE-GO MINIMAL TO MID EFFORT SHOOT LOCATIONS



UNION TRAIN STATION CONCOURSE

ST. JAMES CATHEDRAL

The grounds of St. James Cathedral (Church st. & King st.) offer historic architecture that aligns with the spiritual and symbolic language of the collection. Union Station and subway platforms and concourse provide expansive, public environments filled with constant movement, which is ideal for long exposure, blurred motion, and cinematic tension.

ART DIRECTION: SHOOT LOCATIONS



28 EASTERN CONDOS ROOFTOP

28 Eastern Condos is a potential primary location, offering rooftop and open communal spaces suitable for editorial shooting. The designer's apartment may be used as a break room and dressing area for models and crew, pending confirmation. If unavailable, alternate campus spaces will be secured.

Collaborators

The roles marked with stars are yet to be filled.

PRODUCER & COORDINATOR

CREATIVE DIRECTOR

*SET DESIGNER

PHOTOGRAPHER & VIDEOGRAPHER

*BTS PHOTOGRAPHER & VIDEOGRAPHER

*PRODUCTION ASSISTANT

*SET RUNNER / ATTENDANT

*WARDROBE ASSISTANT

*SAFETY PATROL

STYLING

*MODELS (3/5)

*ALTERNATE MODELS

HAIR

*MAKEUP

Please inform me of people who are interested in filling any of the vacant roles. Email me at theodora.etokimo@gmail.com or on Instagram [@theoriginal.design](https://www.instagram.com/theoriginal.design)

In the coming weeks, I will send a *His Vessel Production Crew Roles* form so we can fill in our roles, create a crew directory, make a group chat to communicate plans and progress, and inform you of dates, times, locations, and call sheets.

NOTE FROM THE DESIGNER



Thank you for taking the time to support my vision and creativity, and for offering your talents, ideas, and energy to this project. I'm truly grateful that you're choosing to join me on this journey.

I can't wait to hear back from you and begin building something meaningful and worth sharing together. I hope you believe in this project as much as I do.

I'm so grateful,

Sheedora E.

WHILE THERE IS STILL TIME

Mrs
Lesse

THEODORA ETOKIMO